

Scroll  
50

Hi Kid!  
Dean snakes

To my best teacher  
Ruth Ann McCall

To wonderful person  
Phyllis Williams

To a well teacher  
Mary Jane Nelson

To a well teacher  
Charlotte Tottle

To a well teacher  
Eddie Abbott

To a well teacher  
Lillian Fairchild

To a well teacher  
Edwin Fibiher

to the best history teacher  
Roger Munson  
Loren Ellsbury  
Larry Housley  
Eddie Abbott  
Do ever  
Lola  
Thanks for those  
and easy tests!  
Rex Houston  
To a nice teacher  
Charlotte Tottle

To a well teacher  
Mike Logsdon  
Hope you get a better class  
next year!  
Edwin Fibiher  
(shorty) "51"

Best of luck  
to a well  
teacher  
Bill McLoon  
"54"

Thanks a lot  
Raymond P. Martin

Best of luck to you!  
Phyllis Canady  
May the wheel of fortune  
ever turn in your favor  
To Len Peter

Leo Wisecop  
"54"  
Dean J. Lley  
"50" "54"

see you  
next year  
Dick Downing

Thanks a lot  
Raymond P. Martin

"So a swell teacher"  
Sondra Hall  
Lots of luck to a  
wonderful teacher"  
Shirley Anderson  
"I regret"  
Constance McNaughton  
(1952)  
Best wishes  
Leona Stelley  
"57"

To a well  
teacher, Kenneth  
Deddy  
"Good Luck"  
Robert Wallace  
To a well  
teacher friend  
Dorothy Goldsmith  
To a well old Gal  
whose hair is a lot  
(sometimes)  
Shirley Frederickson  
See you next year  
in room 308 (maybe)  
Mary Lou Johnson

Best wishes  
and good luck"  
Richard Carpenter  
"I hate to leave you!"  
John Cooper  
"To my best teacher"  
Donna Effkamp  
your awful  
student  
"Good Luck"  
Janice Williams  
"See you next  
year"  
Best of luck to  
my best  
teachers  
Bonnie Carter

"To the best teacher  
made"  
Margaret Shaper  
"Good Luck"  
Emmett Dearborn  
To the best  
teacher in  
the school is you"  
Robert Knight  
To the best  
teacher I  
know  
Pat Cummingham  
the best of luck  
to a fine teacher  
Delores Stevens

"Good Luck"  
Sandra Browning  
"54"

To a well  
teacher  
Clarence East  
Winters

Eddie Bayne  
"54"

To a well  
teacher  
Clarence East  
Winters

Nice teachers  
Barbara Anderson

To my favorite teacher  
Virginia Knight  
Georgia DeVoogd

To the best eighth  
grade teacher  
Nyla Stamba

To my favorite teacher  
Mary Fow Fuller

BEST WISHES  
GERALD SANDVIG '60"

Had a lot of fun in here  
this year Jim Brannan

Public enemy  
number one  
Don Doherty  
LOTS of LUCK  
HERYSEBRING

to the best teacher in the  
Don Williams

Richard Dovich School  
RAYMOND HANSEN  
HENRY ELLIAM

ELUDE  
WALLACE  
GOD

To a nice teacher  
Mary Nordstrom

to my best teacher  
Don Crouse

Wendell Hanmer

To a wonderful teacher  
Harriet Swank  
Don Amberson

To a good time with  
a good teacher.  
Maurice "54" So Am Ward Sanford

To a swell teacher  
Donna Aides  
Maurice "54" So Am Ward Sanford  
Madlene "50"  
Tommy Myers

John P. Best

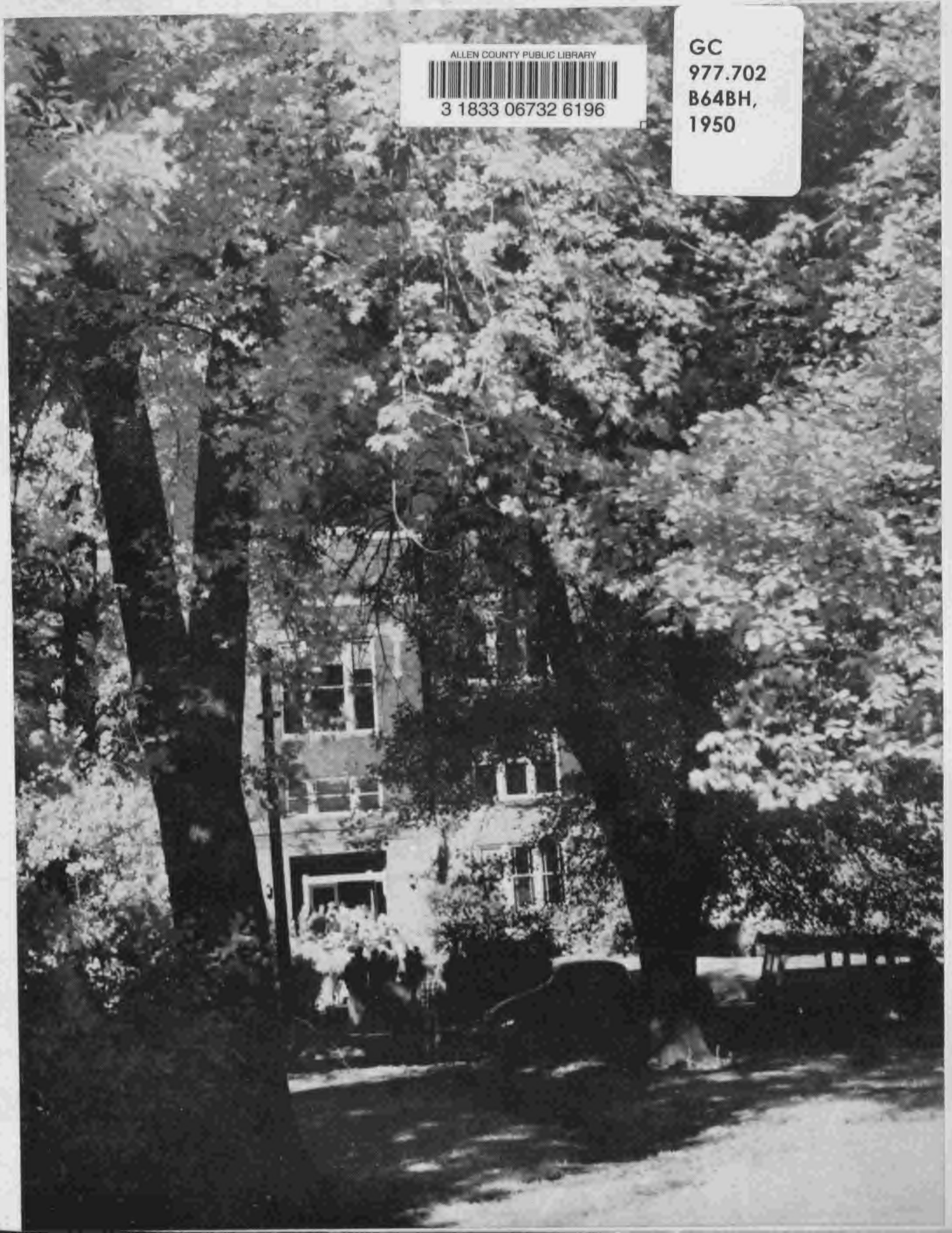
*The 1950 Scroll* published by *Boone High School, Boone, Iowa*

ALLEN COUNTY PUBLIC LIBRARY



3 1833 06732 6196

GC  
977.702  
B64BH,  
1950



## *Wormin' Our Way Through*

*THE 1950 SCROLL STAFF has endeavored to present within these pages a life-like picture of the activities of Boone High School, characterized by a busy student worm. As sophomores we began the twistings and turnings which carried us along our way through three years at B. H. S. Now, at the conclusion of our senior year, the worm turns. After having successfully wormed our way through books and all the problems which activity in any school presents, we are fully prepared to make our contribution to society.*

**FACULTY**

WALK IN



# Administration



Louise Benson, D. F. Seaton, Mrs. Kenneth Anderson,

*I wish to take this opportunity to congratulate the seniors of Boone High School upon the successful completion of their high school course. May their future also be one of continued success and happiness.*

*The staff and sponsors of the Scroll are also to be commended for the excellent and complete record of the activities of Boone High School students during 1949-1950 as portrayed in this yearbook.*

D. F. SEATON, Superintendent

## *The Board of Education : 1949-1950*

WILLARD M. McCARTNEY, *President*

PAUL E. HELLWEGE, *Secretary*      PAULINE CURRY, *Treasurer*

A. V. DORAN      MRS. EMMA SUTTON

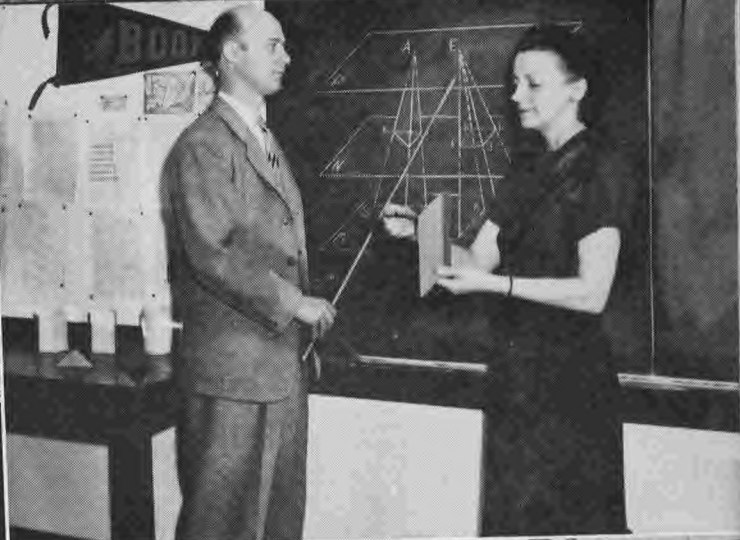
CLYDE JAY      DON F. KRUSE

*Mrs. H. J. Van Ness, Peter Solar*

*May I congratulate the staff and advisers for the fine work in the production of this year's Scroll. Yours was a great responsibility in capturing in print and pictures the high lights of this school year. You have incorporated within these covers ideas, incidents, and school experiences that will furnish all of you some very pleasant memories and opportunities for enjoyment for years to come.*

PETER SOLAR, *Principal*





## Boone High School Faculty

Upper left, *Advisors*: C. J. MARTINDALE; VAUGHN THORNBURGH.

Upper right, *Mathematics*: DALE T. PEER; NAOMI HICKS.

Upper center, *Librarian*: JACK TILLSON. *Library Supervisor*: MRS. ICK.

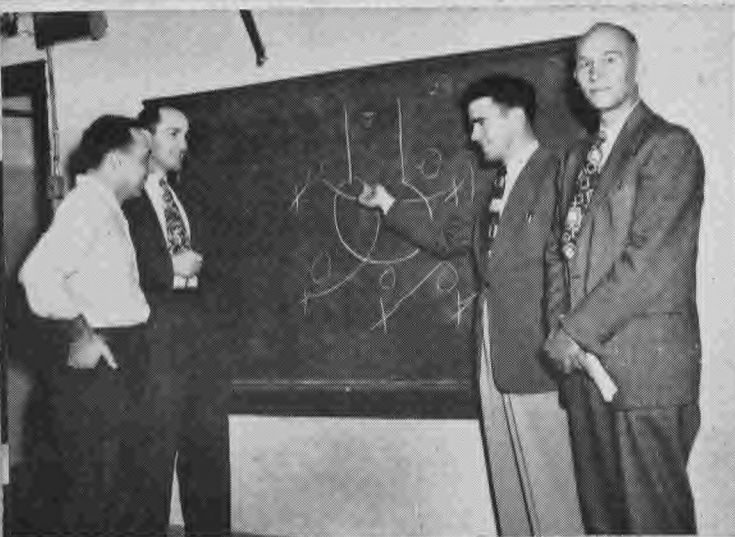
Lower center, *Commercial*: MARGARET TURNER; JANE EALY; WILLIAM HARTLEY.

Lower right, *Fine Arts*: KONRAD SCHOLL; ELLSWORTH BALDWIN; LOUCELLE NELSON; MRS. OVERBECK. Not shown, ALBERTA SIMON.

Lower left, *Social Studies*: J. R. THORNGREN; RAY D. LAMB; FRIEDA PAGEL; MARGUERITE SKILLING; C. J. MARTINDALE.







## *Boone High School Faculty*

Upper right, *Language*: CELESTINE EVANS; MRS. TAYLOR;  
MRS. STEVENS; LOUISE LINDERBLOOD; GRACE SLOSSON.

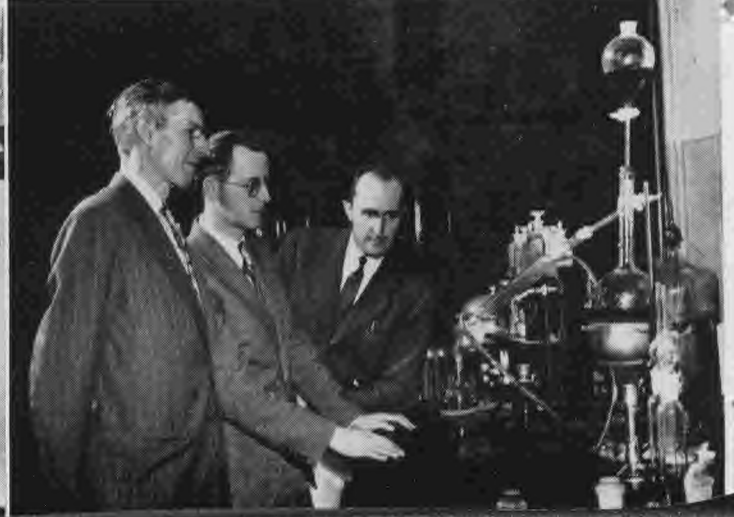
Upper left, *Physical Education*: L. K. LEWIS; HOWARD STUTZ-  
MAN; GALE JOHNSON; FRED O. EKSTRAND. Not shown,  
LARRY OWENS.

Upper center, *Girls' Physical Education*: JEAN SWENSON;  
SHIRLEY LONG.

Lower center, *School Nurse*: MRS. CARLSON.

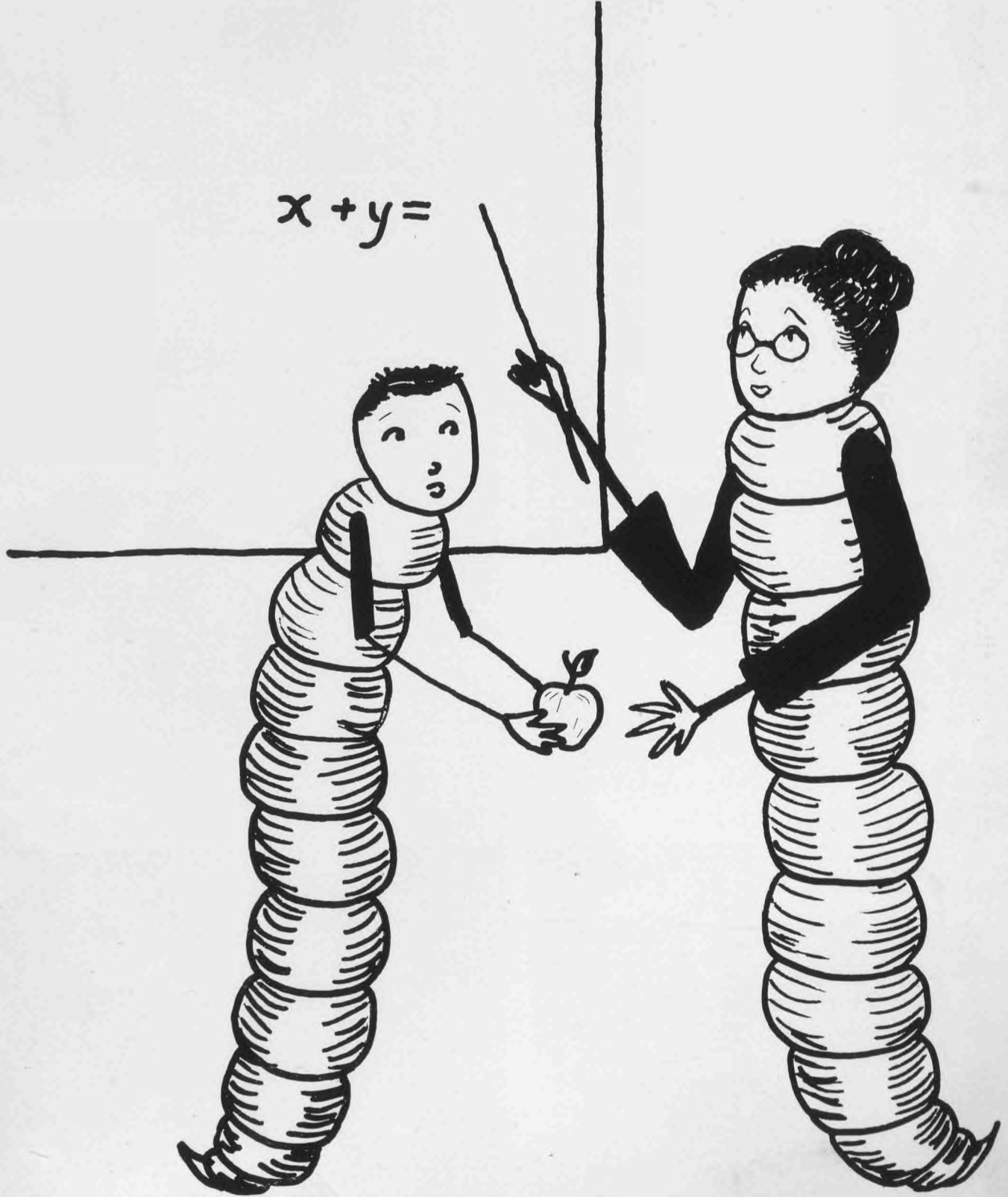
Lower left, *Arts and Crafts*: MRS. BRUNNER; MRS. ABSHER;  
NOEL JONES; JOHN SMOOT; ROBERT SHORB; A. H. LEIN.

Lower right, *Science*: H. L. CUNNINGHAM; JOHN SHADLE;  
HOWARD STUTZMAN.



# CLASSES

$$x + y =$$



## Seniors



**FIRST ROW:** ADAMSON, JOHN, General: Football 1, 2, 3; Basketball 1, 2; Track 1, 2; Homeroom President 3; Lettermen's Club 2, Treasurer 3; Hi-Y 3 ★ AHRENS, GERALD, Arts and Crafts: Swimming 2; Homeroom Secretary 3; Hi-Y 2, 3 ★ ANDERSON, BEVERLY JEAN, Stenographic: Mixed Chorus 2, 3; Girls' Glee Club 1, 2, 3; Pep Club 2, 3; B-Y-ettes 1, 2; Hi-Tri 2, 3 ★ ANDERSON, BEVERLY JOYCE, General: Mixed Chorus 1, 2; Girls' Glee Club 1, 2; Small Music Groups 1; Speech Activities 1, 2; "Divine Flora"; "Sky Road"; Pep Club 1, 2, Historian 3; B-Y-ettes 1, Secretary 2; Hi-Tri 2, 3.

**SECOND ROW:** ANDERSON, CHARLES, Scientific: Movie Operator 2, 3 ★ ANDERSON, IONE, General: The Bumble "B" 1, 2; Scroll 3; Quill and Scroll 3; Mixed Chorus 2, 3; Girls' Glee Club 1, 2, 3; "Pink and Patches"; "Sky Road" stage crew; B-Y-ettes 1, 2 ★ ANDERSON, GENE, General ★ ASPENGRIN, MELVIN, Arts and Crafts.

**THIRD ROW:** ATHERTON, MARGARET, General: Orchestra 1, 2; Mixed Chorus 1, 2; Girls' Glee Club 1, 2; Small Music Groups 2; Speech Activities 3; "Growing Pains" stage crew; Pep Club 1, 2, 3; B-Y-ettes 1, 2; Hi-Tri 2, 3; "Sky Road" stage crew ★ BECKER, GAROLD, Clerical ★ BENNETT, BARBARA, General: Dolphin Club 1, 2, 3; The Bumble "B" 1, 2, News Editor 3; Scroll 2; Mixed Chorus 1, 2, 3; Girls' Glee Club 1, 2, 3; Small Music Groups 1, 3; D. D. T. Club 1; Speech Activities 2, 3; "Divine Flora" stage crew; "Growing Pains"; "Sky Road"; "Lawd, Does You Understand?"; B-Y-ettes 1, 2; Hi-Tri 2, 3; All-State Chorus 3; Pep Club 3. ★ BERGLUND, JAMES, General: Football 1; Track 2, 3; Swimming 1, 2, 3; Student Council 2; Junior Class President; Lettermen's Club 2, 3; Hi-Y 2, 3.

**FOURTH ROW:** BERRY, WILLIAM, General: Basketball 1, 2; Hi-Y 1, 2 ★ BLOOMQUIST, JO ANN, Stenographic: B-Y-ettes 1, 2; Hi-Tri 3 ★ BORG, CHARLES, Scientific: Movie Operator 3; National Honor Society 3 ★ BRAINARD, CHARLES, Arts and Crafts: Basketball 1; Hi-Y 2, 3.

**FIFTH ROW:** BRILEY, BARBARA, General: The Bumble "B" 1, 2, Editor-in-Chief 3; Scroll 2, 3; Quill and Scroll 2, President 3; Girls' Glee Club 1; Speech Activities 2, 3; "Lawd, Does You Understand?"; "Sky Road" stage crew; Pep Club 3; B-Y-ettes 1, 2; Hi-Tri 2, 3 ★ BROWN, HOWARD, Scientific: Basketball 1, 2; Track 2, 3; Swimming 3; Homeroom President 3; Lettermen's Club 3 ★ BUTLER, JERRY, Arts and Crafts: Basketball Manager 1 ★ BURLINGAME, JOAN, Scientific: Band 1, 2, 3; Orchestra 1, 2, 3; Mixed Chorus 1, 2, 3; Girls' Glee Club 2, 3; Small Music Groups 1, 2, 3; Pep Club 1, 2, 3; Homeroom Secretary 3; B-Y-ettes 1, 2; Hi-Tri 2, 3; Homecoming Queen 3.

**FIRST ROW:** CARLSON, BONNIE, Arts and Crafts: The Bumble "B" 1; B-Y-ettes 1 ★ CARLSON, RICHARD, General: Band 1, 2; Small Music Groups 1, 2 ★ CLARK, JACK, General: Football 2, 3; Track 1, 2, 3; Student Council 2; Hi-Y 2, 3 ★ CLINE, ZELDA, Stenographic: Girls' Glee Club 1; "Straw in Her Hair"; Pep Club 3; Homeroom President 2; B-Y-ettes 1, 2, Program Chairman; Hi-Tri 2, Secretary 3; Basketball 1, 2.

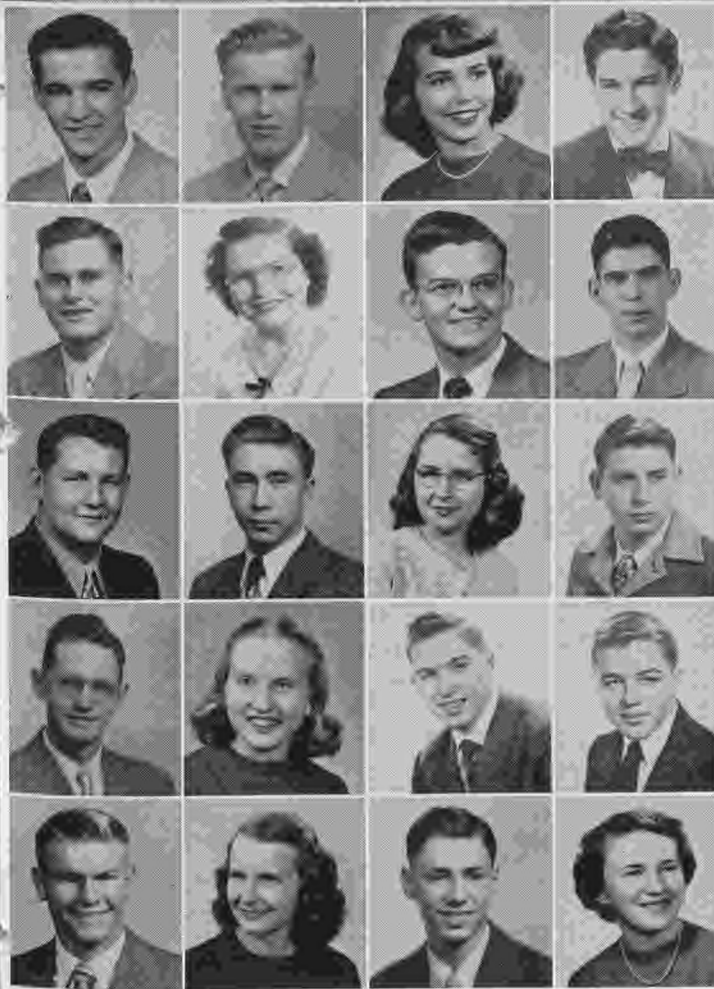
**SECOND ROW:** CLINK, CLARENCE, General: Band 1; Mixed Chorus 1; Small Music Groups 1 ★ COCHRAN, PATRICIA, Stenographic ★ COLE, NORMAGENE, Stenographic: The Bumble "B" 1, 2, Advertising Manager 3; Quill and Scroll 2, 3; Scroll 2, 3; Girls' Glee Club 1; National Honor Society 3; Homeroom Secretary 3; B-Y-ettes 1, 2; Hi-Tri 2, 3 ★ COLE, PEARL, Arts and Crafts: Girls' Glee Club 1; "Child Wonder."

**THIRD ROW:** COOPER, JOAN, Scientific: Scroll 3; Quill and Scroll 3; Band 1; Mixed Chorus 2, 3; Girls' Glee Club 1, 2, 3; Pep Club 2, 3; National Honor Society 3; Homeroom Secretary 3; B-Y-ettes 1, 2; Hi-Tri 2, 3; Small Music Groups 1; "Sky Road" stage crew ★ COWHICK, PATSY, Stenographic: Mixed Chorus 3; Girls' Glee Club 1, 2, 3; "Divine Flora" stage crew; Pep Club 3; B-Y-ettes 1, 2; Hi-Tri 2, 3 ★ CRARY FLOYD, General: Football 1, Manager 3; Basketball 1; Lettermen's Club 2, Vice-President 3; Hi-Y 2, 3 ★ CRAVEN, COLEEN, Stenographic: Band 1; Girls' Glee Club 1; "Sugar and Spice" stage crew; "Sky Road" stage crew.

**FOURTH ROW:** CROUSE, MARILYN, General: The Bumble "B" 2; Mixed Chorus 1, 2, 3; Girls' Glee Club 1, 2, 3; Small Music Groups 1, 2, 3; "Sugar and Spice"; Hi-Tri 3 ★ CURELL, MARILYN, Stenographic: Scroll 2, Advertising Manager 3; Quill and Scroll 3; Mixed Chorus 1, 2; Girls' Glee Club 1, 2; Pep Club 2, Secretary-Treasurer 3; Student Council 2, 3; National Honor Society 3; Sophomore Class Treasurer; Homeroom Secretary 1; B-Y-ettes 2, Secretary 1; Hi-Tri 2, 3 ★ DAHL, ROBERT, Scientific: Swimming 1, 2, 3; "Sky Road" stage crew; Lettermen's Club 2, 3; Hi-Y 2, 3 ★ DAVIS, LARRY, General: Track 1; Football 2, 3; Hi-Y 2, 3; Homeroom Secretary 2; Lettermen's Club 3.

**FIFTH ROW:** DEDE, CAROL, Arts and Crafts: Mixed Chorus 1; B-Y-ettes 1, 2; Hi-Tri 2, 3 ★ DENNERT, ANN, General: Band 1, 2; Girls' Glee Club 1; Small Music Groups 2 ★ DIEHL, DONALD, General: Basketball 1; Track 1; Swimming 1, 3; Small Music Groups 1; Cheerleader 1, 2, 3; Student Council 1, 2; Homeroom President 1, 2; Hi-Y 2, 3 ★ DILLOW, BONNIE, Stenographic: "Child Wonder"; "Sky Road"; Mixed Chorus 1.





**Colors: Powder blue and silver**

**FIRST ROW:** DODD, DONALD, General: Mixed Chorus 1; Boys' Glee Club 2 ★ DONALDSON, ROBERT, Scientific ★ DORAN, DOLORES, Stenographic: The Bumble "B" 1, 2, 3; "Sugar and Spice"; "Sky Road" stage crew; Pep Club 1, 2, 3; B-Y-ettes 1, 2; Hi-Tri 2, 3 ★ DUFFY, JOHN, Scientific: Student Council 1, 2; Homeroom President 1; Football 2; The Bumble "B" 2; Hi-Y 2, 3; Scroll 2, 3; Quill and Scroll 2, 3; "Sky Road"; National Honor Society 3.

**SECOND ROW:** ELLSBURY, WESLEY, General ★ EISERMAN, IRENE, General: The Bumble "B" 1, 2 ★ FANGMAN, THOMAS, General: Band 1, 2, 3; Pep Band 1, 2, 3; Orchestra 1, 2, 3; Mixed Chorus 1, 2, 3; Small Music Groups 1, 2, 3; Boys' Glee Club 1, 2, 3; Speech Activities 3; "Penrod" stage crew; "Sorority House" stage crew; "Lawd, Does You Understand?"; "Divine Flora"; "Jeweled Cross"; "Sky Road"; "Date with Judy"; "Growing Pains"; Student Council 2; Hi-Y 1, 2, 3; All-State Orchestra 1; All-State Chorus 2 ★ FARLEY, MARVIN, General: Football 1; Track 1.

**THIRD ROW:** FERGUSON, RONALD, General: Band 1, 2, 3; Orchestra 1, 2, 3; Mixed Chorus 3; Boys' Glee Club 3; Pep Band 1, 2; "Straw in Her Hair" ★ PRIEST, ROGER, General: Football 1; Track 1, 2; Hi-Y 2, 3 ★ FRITCH, KATHERINE, Stenographic: Jordan Basketball 1; Jordan Band 1; Pep Band (Jordan) 1; Y-teens (Jordan) 1; Jordan Glee Club 1 ★ GERMER, RICHARD, dropped.

**FOURTH ROW:** GOLDSWORTH, PAUL, General: Mixed Chorus 1, 2, 3; Boys' Glee Club 1, 2, 3; Hi-Y 3 ★ GRIMES, NANCY, General: Scroll 2, Co-editor 3; Quill and Scroll 2, 3; Pep Band 1, 2; Band 1, 2; Orchestra 1, 2; Small Music Groups 1, 2; Mixed Chorus 1; Speech Activities 2, 3; "Divine Flora"; "Lawd, Does You Understand?"; "Jeweled Cross"; "Sky Road"; Pep Club 2, 3; National Honor Society 2, 3; B-Y-ettes 1, 2; Hi-Tri 2, 3; All-State Orchestra 1, 2 ★ GRIMM, ARLO, General: Football 1, 2, 3; Basketball 1, 2, 3; Track 1, 2; Homeroom President 2; Lettermen's Club 2, 3; Hi-Y 2, 3 ★ GRIMM, GLENN, Scientific: Football 1, 2, 3; Basketball 1, 2; Track 1, 2, 3; Lettermen's Club, Treasurer 2, Vice-President 3; Hi-Y 2, Vice-President 3.

**FIFTH ROW:** GUSTOFSON, DONALD, Scientific: Football 1, 2, 3; Basketball 2; Track 1, 2, 3; Mixed Chorus 2, 3; Boys' Glee Club 2, 3; "Divine Flora"; "Lawd, Does You Understand?"; "Sky Road"; Lettermen's Club 3; Hi-Y 2, 3; P. A. System Operator 1, 2, 3 ★ HALL, GRETCHEN, Stenographic: The Bumble "B" 1, 2; "A Date with Judy"; "Sparkin"; "Growing Pains"; "Balcony Scene"; Pep Club 1, 2, 3; B-Y-ettes 1, Program Chairman 2; Hi-Tri 2, 3 ★ HALVERSON, HARLEY, Scientific: Band 3; Mixed Chorus 2; Speech Activities 3; "Sky Road"; National Honor Society 3; Hi-Y 3; Movie Operator 1, 2, 3; Pep Band 3 ★ HARNAN, MARY, General: Mixed Chorus 1, 2; Girls' Glee Club 2; B-Y-ettes 1.

**FIRST ROW:** HARVEY, ROBERT, Scientific: Student Council 1, 2, 3; Sophomore Class President; Homeroom President 1, 2, 3; Hi-Y 2, Secretary 3; Movie Operator 2, 3 ★ HAYES, MARY, General ★ HERMAN, ALICE, Scientific: Scroll 3; Band 1, 2, 3; Orchestra 1, 2, 3; Mixed Chorus 2; Girls' Glee Club 2; Small Music Groups 1, 2, 3; Speech Activities 2, 3; Pep Club 3; National Honor Society 2, 3; Homeroom Secretary 3; B-Y-ettes 1, 2; Hi-Tri 2, 3 ★ HESSEL, GARY, Scientific: Scroll 2; Mixed Chorus 1, 2, 3; Boys' Glee Club 1, 2, 3; Hi-Y 2, Chaplain 3.

**SECOND ROW:** HUDSON, BETH, General: Mixed Chorus 1, 2, 3; Girls' Glee Club 1, 2, 3; "Divine Flora" stage crew; "Sky Road"; Pep Club 3; B-Y-ettes 1, Treasurer 2; Hi-Tri 2, Vice-President 3; All-State Chorus 2; Small Music Groups 1, 2, 3 ★ INGALLS, SHIRLEY, Stenographic: Basketball 1, 2, Captain 3; Mixed Chorus 1, 2, 3; Girls' Glee Club 1, 2, 3; Small Music Groups 2, 3; "Sky Road" stage crew; "Straw in Her Hair"; National Honor Society 3; Senior Class Secretary Treasurer; Homeroom Secretary 1, 2; B-Y-ettes 1, 2; Hi-Tri 2, 3 ★ JACOBSON, LAVONNE, General: Girls' Glee Club 1; "Sky Road" stage crew; "Sugar and Spice"; "Growing Pains"; B-Y-ettes 1, 2; Hi-Tri 2, 3 ★ JAY, BEVERLY, Scientific: The Bumble "B" 2; Speech Activities 1, 2, 3; "Lawd, Does You Understand?"; "Sorority House"; "Jeweled Cross"; "Growing Pains"; Pep Club 3; Student Council 3; Homeroom Secretary 2; B-Y-ettes 1, 2; Hi-Tri 2, 3.

**THIRD ROW:** JENSEN, ROBERT, Scientific: Swimming 1, 2, 3; Cheerleader 3; Student Council 1; Homeroom President 1, 3; Lettermen's Club 2, 3; Hi-Y 2, 3; Movie Operator 2, 3 ★ JOHNSON, MARILYN, General: Band 1, 2, 3; Orchestra 3 ★ JOHNSON, WILLIAM, Scientific: Golf 1, 2, 3; Scroll 3; Quill and Scroll 3; Band 1, 2, 3; Orchestra 1, 2, 3; Mixed Chorus 1, 2; Small Music Groups 1, 2, 3; Pep Band 1, 2, 3; Boys' Glee Club 1, 2; Speech Activities 1, 3; "Sky Road"; National Honor Society 3; Lettermen's Club 2, 3; Hi-Y Vice-President 2, President 3; All-State Orchestra 1; All-State Band 2 ★ JOHNSTONE, JENET, General: Dolphin Club 1, 2, President 3; Scroll 2, 3; Quill and Scroll 2, 3; Girls' Glee Club 1; Pep Club 1, Cheerleader 2, 3; B-Y-ettes 1, President 2; Hi-Tri 2, Program Chairman 3.

**FOURTH ROW:** JONES, RUTH, General: Tumbling 1, 2; The Bumble "B" 2, 3; Scroll 3; Quill and Scroll 3; Orchestra 1; Girls' Glee Club 1; Speech Activities 1, 2, 3; "Divine Flora"; "Sorority House"; Pep Club 3; B-Y-ettes 1, 2; Hi-Tri 2, 3 ★ KANESS, KENNETH, Scientific: Football 1, 2, 3; Mixed Chorus 1, 2, 3; Boys' Glee Club 1, 2, 3; Small Music Groups 1; Lettermen's Club 3 ★ KING, HELEN, General: Girls' Glee Club 1, 2 ★ KLUTE, DENNIS, Scientific: Football 1, 2, 3; Track Manager 1; Student Council President 3; Junior Class Vice-President; Senior Class Vice-President; Hi-Y 2, 3; Basketball 1; Lettermen's Club 3.

**FIFTH ROW:** KNUDSEN, PATRICIA, General: Orchestra 1, 2; Mixed Chorus 2, 3; Girls' Glee Club 2, 3; Small Music Groups 1, 2, 3; "Sky Road" stage crew; "Child Wonder"; Pep Club 3; Hi-Tri 3; All-State Orchestra 2 ★ KRUG, DONALD, General: Football 1, 2, 3; Track 1, 2, 3; Lettermen's Club 2, 3; Hi-Y 2, 3 ★ LACEY, THOMAS, Arts and Crafts ★ LARSON, DALE, Arts and Crafts: Football 1, 2, 3; Track 1, 2, 3; Lettermen's Club 2, 3; Hi-Y 2, 3.



**Motto: "Attain the unattainable"**

**FIRST ROW:** LEININGER, ROBERT, Arts and Crafts; Football 1, Track 1, 2; Hi-Y 3 ★ LUNDGREN, PATRICIA, General ★ LYCKE, NORMAN, General; Track 1, 2; Basketball 1, 2; Football 1, 2, 3; Swimming 2; Hi-Y 2, Treasurer 3; Student Council 3; Lettermen's Club 3 ★ LYON, JEANNE, Scientific; Band 1, 2, 3; Orchestra 1, 2, 3; Mixed Chorus 1, 2, 3; Girls' Glee Club 1, 2, 3; Small Music Groups 1, 2, 3; Speech Activities 1, 3; "Jeweled Cross"; "Sky Road"; "Date with Judy" stage crew; "Divine Flora" stage crew; Pep Club 3; B-Y-ettes 1, 2; Hi-Tri 2, 3.

**SECOND ROW:** McALPINE, DOLORES, General; The Bumble "B" 1, 2; Mixed Chorus 2, 3; Girls' Glee Club 1, 2, 3; Speech Activities 3; "Sky Road"; "Divine Flora"; B-Y-ettes 1, 2; Hi-Tri 2, 3 ★ McCARTNEY, WILLARD, General; Football 1, 2, 3; Basketball 1, 2, 3; Track 1, 2; Mixed Chorus 1; "Divine Flora"; "Lawd, Does You Understand?" Hi-Y 2, 3; Lettermen's Club 3; "Sky Road" ★ McCASKEY, BETTY, Stenographic ★ MALCOM, JANICE, General; Hi-Tri 2, 3.

**THIRD ROW:** MALLAS, HELEN, dropped ★ MALLICOAT, PATRICIA, Stenographic; Dolphin Club 3; Mixed Chorus 2, 3; Girls' Glee Club 2, 3; "Divine Flora" stage crew; "Straw in Her Hair"; Pep Club 3; B-Y-ettes 1, Secretary 2; Hi-Tri 2, 3 ★ MARTIN, RUANNE, General; Scroll 2, 3; Quill and Scroll 2, 3; Mixed Chorus 2, 3; Girls' Glee Club 1, 2, 3; Speech Activities 2, 3; "Date with Judy" stage crew; "Divine Flora" stage crew; "Growing Pains" stage crew; "Sky Road" stage crew; Pep Club 3; National Honor Society 2, 3; B-Y-ettes 1, 2; Hi-Tri 2, 3 ★ MAYNARD, JOHN, Scientific; Football 2, Manager 3; Basketball Manager 3; Track Manager 2, 3; Homeroom Secretary 3; Lettermen's Club 3; Hi-Y 3; Movie Operator 2, 3.

**FOURTH ROW:** MEYERS, BETTY, General; B-Y-ettes 1, 2; Girls' Glee Club 1; Speech Activities 3; "Divine Flora" stage crew ★ MILLER, MARILYN, General; Band 1, 2, 3; Orchestra 1, 2, 3; Small Music Groups 1, 2, 3; Mixed Chorus 2, 3; Girls' Glee Club 1, 2, 3; "Divine Flora" stage crew; Pep Club 2, Vice President 3; Student Council 1; National Honor Society 3; Homeroom President 1, 2; Homeroom Secretary 3; B-Y-ettes 1, Vice-President 2; Hi-Tri 2, President 3; All-State Orchestra 1, 2, 3 ★ MITCHELL, MELVIN, General; Football 1, 2, 3; Basketball 1, 2; Track 1, 2, 3; Lettermen's Club 2, 3; Hi-Y 3 ★ MODELAND, VERNON, Scientific.

**FIFTH ROW:** MOELLER, MERLE, Arts and Crafts ★ MOFFITT, CLAYTON, Scientific; Golf 1, 2, 3; Mixed Chorus 1, 2; Boys' Glee Club 1, 2; Homeroom Secretary 2; Lettermen's Club 2, 3; Hi-Y 2, 3 ★ MORGAN, ANNE, Clerical; Mixed Chorus 1, 2, 3; Girls' Glee Club 1, 2, 3; Small Music Groups 2; B-Y-ettes 1, 2; Hi-Tri 2, 3 ★ MORRIS, WARREN, General; Football 1, 2, 3; Basketball 1, 2, 3; Track 3, Manager 1, 2; Homeroom Secretary 2, 3; Lettermen's Club 2, 3; Hi-Y 2, 3.

**FIRST ROW:** MUNSELL, DORA, General; Band 1, 2, 3; Orchestra 1, 2, 3; Mixed Chorus 2, 3; Girls' Glee Club 1, 2, 3; Small Music Groups 1, 2, 3; Pep Club 1, 2, 3; B-Y-ettes 1, 2; Hi-Tri 2, 3 ★ MYERS, MARILYN, General; Mixed Chorus 1, 2, 3; Girls' Glee Club 1, 2, 3; Small Music Groups 2, 3; Pep Club 3; B-Y-ettes 1, 2; Hi-Tri 2, 3; Homeroom Secretary 3 ★ NASALROAD, EUGENE, Arts and Crafts ★ NELSON, HAROLD, Scientific; Football 1, 2, 3; Basketball 1, 2, 3; Track 1, 2, 3; Lettermen's Club 2, 3; Hi-Y 2, 3.

**SECOND ROW:** NELSON, MARILYN, General; Orchestra 1, 2, 3; Mixed Chorus 2, 3; Girls' Glee Club 1, 2, 3; B-Y-ettes 1, 2; Hi-Tri 2, 3 ★ NELSON, ROY, Scientific; Student Council 3; Homeroom President 1; Homeroom Secretary 2; Movie Operator 3 ★ NELSON, THOMAS, General; Football 1 ★ NOWELS, PAUL, Arts and Crafts.

**THIRD ROW:** NOWELS, PHYLLIS, General ★ NYSTROM, ROBERT, Arts and Crafts ★ OLSON, MARI JO, Scientific; The Bumble "B" 1, 2, 3; Scroll 2, 3; Quill and Scroll 2, 3; Speech Activities 1, 2, 3; "Date with Judy"; "Growing Pains"; "Lawd, Does You Understand?" "Sky Road"; Pep Club 2, 3; Student Council 1, 2; National Honor Society 2, 3; Junior Class Secretary; Homeroom President 1; Homeroom Secretary 2; B-Y-ettes 1, President 2; Hi-Tri 2, Publicity Chairman 3 ★ OXFORD, MARILEE, General; Girls' Basketball 1, 2, Manager 3; Mixed Chorus 1, 2, 3; Girls' Glee Club 1, 2, 3; Small Music Groups 2, 3; Speech Activities 3; "Divine Flora" stage crew; "Sky Road" stage crew; Pep Club 3; Homeroom Secretary 1; B-Y-ettes 1, 2; Hi-Tri 2, 3.

**FOURTH ROW:** PEARSON, ROZELLA, Stenographic ★ PETERSEN, MARY LOU, Scientific; Scroll 2, 3; Quill and Scroll 2, 3; Orchestra 1; Mixed Chorus 2, 3; Girls' Glee Club 1, 2, 3; Small Music Groups 1; "Sky Road" stage crew; Pep Club 1, Vice-President 2; President 3; Student Council Secretary 3; B-Y-ettes 1, Vice-President 2; Hi-Tri 2, Treasurer 3; All-State Chorus 2; National Honor Society 2, 3 ★ PIKE, DOROTHY, Arts and Crafts; Girls' Basketball 1; Dolphin Club 1 ★ POLLARD, PHYLLIS, General; The Bumble "B" 2, 3; Quill and Scroll 2, 3; Band 1, 2, 3; Orchestra 3; Girls' Glee Club 1; Small Music Groups 1, 2, 3; B-Y-ettes 1, 2; Hi-Tri 2, 3.

**FIFTH ROW:** POWERS, ROBERT, General; Football 1, 2, 3; Basketball 1, 2, 3; Track 1, 2, 3; Student Council 3; Homeroom President 2; Lettermen's Club 2, 3; Hi-Y 2, 3 ★ QUINN, JOHN, General ★ REED, LESTER, Arts and Crafts ★ REED, MARILYN, General; Girls' Glee Club 2.





**Flower: Pink rose with silver sparkles**

**FIRST ROW:** RICHARDS, CHARLENE, Stenographic: B-Y-ettes 1, 2; Hi-Tri 2 ★ ROGERS, FAYE, Stenographic: Girls' Basketball 1, 2, 3 ★ ROSS, DOROTHY, dropped ★ RUNYAN, HAROLD, Scientific: Basketball 1; Track 1, 2, 3; Swimming 2; Lettermen's Club 2.

**SECOND ROW:** RUNYAN, WESLEY, Scientific: Band 1, 2, 3; Pep Band 1, 2, 3; Small Music Groups 3 ★ SAWYER, ERNEST, General: Basketball 2 ★ SCHOFF, ELIZABETH, Clerical: The Bumble "B" 1, 2, 3 ★ SCHULTZ, RICHARD, Scientific: Golf 1, 2, Captain 3; The Bumble "B" 3; Scroll 2, 3; Quill and Scroll 2, 3; National Honor Society 3; Homeroom President 2; Lettermen's Club 2, Secretary 3; Hi-Y 2, 3.

**THIRD ROW:** SCHWARTZ, WILLIS, General: Football 1, 2, 3; Track 1, 2; Hi-Y 2, 3; Lettermen's Club 3 ★ SEBRING, PHYLLIS, General ★ SHADLE, MARYLENE, Language: Band 1, 2, 3; Orchestra 2, 3; Mixed Chorus 2, 3; Girls' Glee Club 1, 2, 3; Small Music Groups 1, 2, 3; Speech Activities 2; Pep Club 3; Student Council 2; National Honor Society 2, 3; Homeroom Secretary 2; B-Y-ettes 1, 2; Hi-Tri 2, 3 ★ SHELL, ELLA JANE, Stenographic: B-Y-ettes 1.

**FOURTH ROW:** SIDERS, NELLIE, General: The Bumble "B" 1, 2, 3; Scroll 3; Quill and Scroll 2, 3; Girls' Glee Club 1; "Child Wonder"; "Pink and Patches" ★ SIMMONS, STANLEY, Scientific: Band 1, 2, 3; Pep Band 1, 2, 3; Hi-Y 3 ★ SMITH, BETTY, General: Orchestra 1, 2, 3; B-Y-ettes 1 ★ SMITH, CAROL, dropped.

**FIFTH ROW:** SMITH, GERALD, Scientific: Football 1, 2, 3; Track 1; Swimming 1, 2, 3; Lettermen's Club 2, 3; Hi-Y 2 ★ SNYDER, SHIRLEY, General: Girls' Basketball 1; The Bumble "B" 1; Mixed Chorus 1, 3; Girls' Glee Club 1, 2, 3; Small Music Groups 1; Speech Activities 3; "Divine Flora"; "Sky Road"; B-Y-ettes 1, 2 ★ STARK, PAUL, Scientific: Football 1; Basketball 1, 2, 3; Student Council Vice-President 3; Senior Class President; Homeroom President 3; Lettermen's Club 2, President 3; Hi-Y 2, 3; Track 3 ★ STEPHENSON, JOYCE, Language: Band 1, 2, 3; Orchestra 1, 2, 3; Girls' Glee Club 1; Small Music Groups 1, 2, 3; National Honor Society 2, 3; Hi-Tri 3.

**FIRST ROW:** STEVENS, DOROTHY, General: The Bumble "B" 1, 2, Feature Editor 3; Scroll 2, 3; Quill and Scroll 2, 3; "Sky Road" stage crew; Pep Club 1, 2, 3; Homeroom Secretary 1; Homeroom President 3; B-Y-ettes 1, 2; Hi-Tri 2, 3 ★ STOTTS, HELEN, Scientific: Girls' Basketball 3; Girls' Glee Club 1; Pep Club 3; B-Y-ettes 1, 2; Hi-Tri 2, 3 ★ STRANDBERG, SHIRLEY, Language: The Bumble "B" 1, 2; Scroll 2, 3; Quill and Scroll 3; Mixed Chorus 2, 3; Girls' Glee Club 2, 3; Small Music Groups 2, 3; "A Date with Judy" stage crew; "Growing Pains" stage crew; B-Y-ettes 1, Publicity Chairman 2; Hi-Tri 2, 3 ★ THIES, JENNILEE CROOKS, General: Speech Activities 3; "Divine Flora" stage crew.

**SECOND ROW:** THOMPSON, BETTY, Stenographic: The Bumble "B" 1, 2, 3; Scroll 3; Quill and Scroll 2, 3; Mixed Chorus 2, 3; Girls' Glee Club 2, 3; Small Music Groups 2, 3; "A Date with Judy" stage crew; National Honor Society 3; B-Y-ettes 1, 2; Hi-Tri 2, 3 ★ TILLEY, MARJORIE, Clerical: Girls' Glee Club 1, 2 ★ TRITES, HAROLD, General: Football 1, 2, 3; Basketball 1; Track 1, 2; Swimming 2, 3; Hi-Y 2, 3; Lettermen's Club 3 ★ VITT, SHIRLEY, General: The Bumble "B" 1, 2, 3; Scroll 3; Quill and Scroll 3; Mixed Chorus 1, 2; Girls' Glee Club 1, 2, 3; Speech Activities 3; "Sky Road" stage crew; Pep Club 2, 3; B-Y-ettes 1, 2; Hi-Tri 2, 3.

**THIRD ROW:** WALKER, DONNA, Stenographic: Girls' Basketball 1; Mixed Chorus 1, 2, 3; Girls' Glee Club 1, 2, 3; Speech Activities 3; "Divine Flora"; "Sky Road"; "Lawd, Does You Understand?"; B-Y-ettes 1, 2; Hi-Tri 2, 3; Pep Club 3 ★ WALKER, LILLIAN, General: Band 1; Mixed Chorus 1 ★ WALTERS, CAROL, Stenographic: B-Y-ettes 1 ★ WARRINGTON, DONALD, General: Football 1, 2, 3; Basketball 1; Track 1, 2; Swimming 2; Hi-Y 2, 3; Lettermen's Club 3.

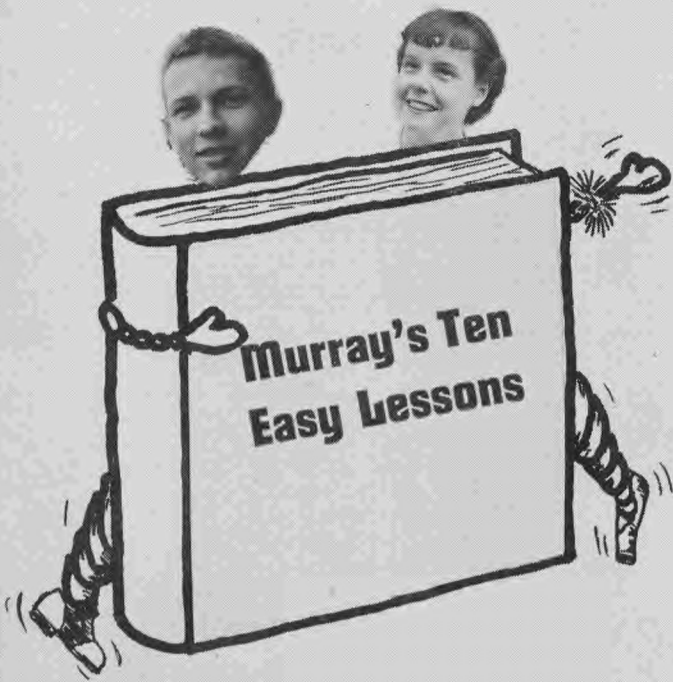
**FOURTH ROW:** WEBB, PATRICIA, General: B-Y-ettes 1 ★ WEISGERBER, RICHARD, General: Golf 3; Band 1, 2, 3; Pep Band 1, 2; Mixed Chorus 1, 2, 3; Small Music Groups 1, 2, 3; Boys' Glee Club 1, 2, 3; Speech Activities 3; "Divine Flora"; "Jeweled Cross"; Student Council 3; Hi-Y 2, 3 ★ WINTERS, ANN MARIE, General: B-Y-ettes 1, 2; Hi-Tri 2 ★ WISCUP, EMMA BELLE, General: Mixed Chorus 2, 3; Girls' Glee Club 1, 2, 3; "Child Wonder"; "Sky Road" stage crew; B-Y-ettes 1, 2; Hi-Tri 2, 3.

**FIFTH ROW:** WOODWORTH, LAUREL, General: Mixed Chorus 2, 3; Girls' Glee Club 1, 2, 3; B-Y-ettes 1, 2; Hi-Tri 2, 3; "Sky Road" stage crew ★ WOOLSON, FRED, General ★ ZAGEL, DOROTHY, General: Scroll 2, Co-editor 3; Quill and Scroll 2, Secretary 3; Mixed Chorus 2, 3; Girls' Glee Club 1, 3; National Honor Society 2, 3; Homeroom President 3 ★ Not pictured, BIELFELT, WILLIAM, General.





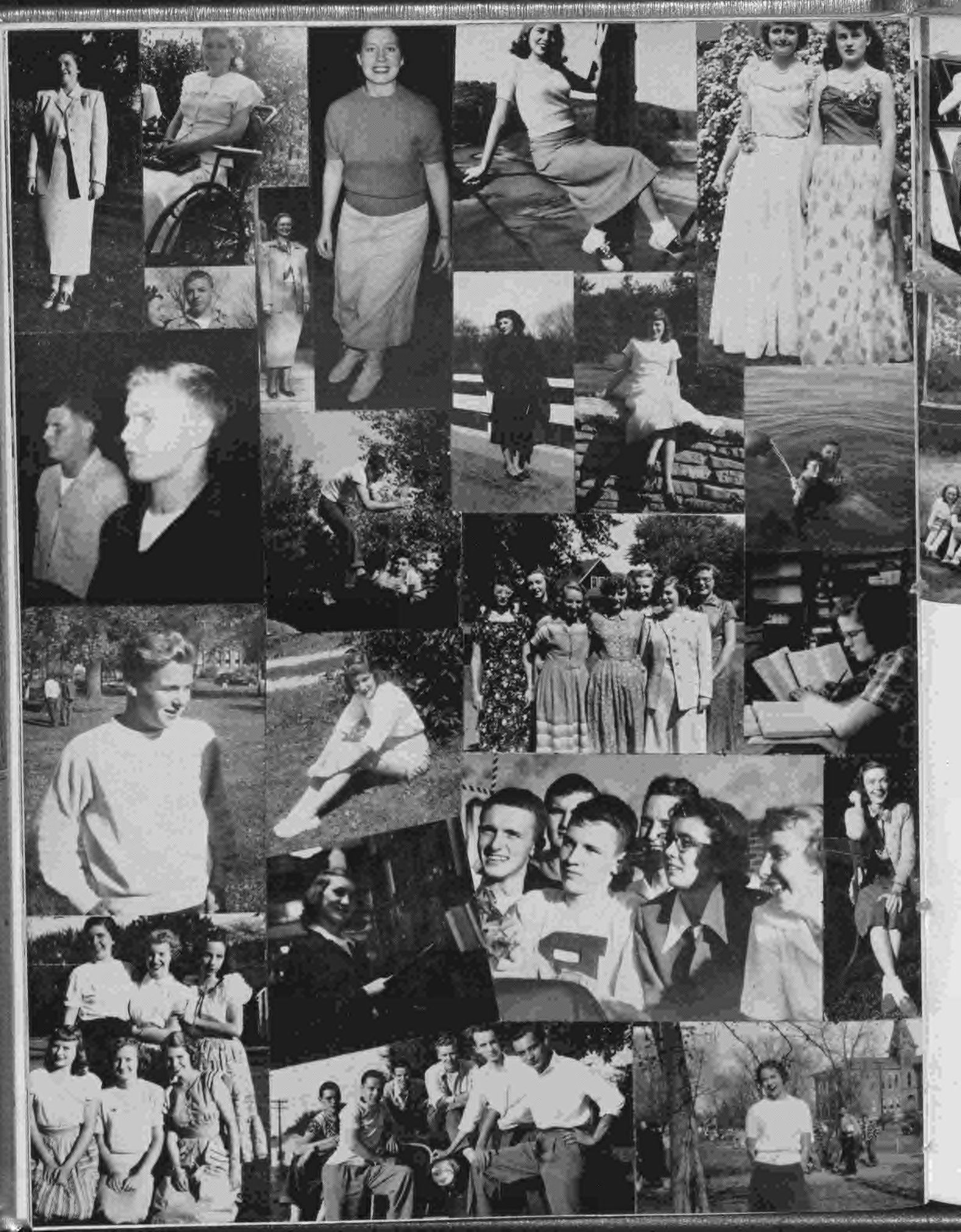
# BEST SELLER



# RS OF 1950









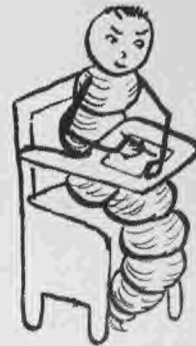
## Sophomore Sketches

'Twas the night before vacation and all through the town—  
 All the sophomores were joyously running around.  
 Our books were all thrown in heaps on the floor—  
 Our fate was decided—why study some more?  
 Doris Krug was nestled all snug in her bed—  
 While visions of Duane danced through her head.  
 And 'Brick' in his Chevie and Mike in his Ford—  
 Just rushed down the street with a chug and a roar.  
 Here came Marilyn and Donna with drum and with horn—  
 The sophomores for sure will not sleep until morn.  
 Away from the noise I flew like a flash—  
 Bumped into Joan Hiltz with a thud and a crash.  
 Then Carole to my wondering eyes did appear—  
 And led all the Sophomores in one rousing cheer.  
 And far from behind came a voice from the mist—  
 Yelling loudly and clearly—"Call for Philip Morris."

My, here comes a man so lively and quick—  
 He's tall and he's skinny—it can't be Saint Nick.  
 We all looked around with wonder—then joy—  
 Of course, it's Coach Stutzman and his basketball boys.  
 More rapid than eagles his coursers they came—  
 And he whistled, and shouted, and called them by name—  
 On Jim, on John, on Donald, and Paul—  
 They piled up the points while the crowd stood enthralled.  
 Then Phil, Bob, and Dick came into view—  
 With Gretchen and Joan—just to mention a few—  
 And I heard them exclaim as they strolled  
 out of sight—

"The life of a sophomore is really all right."





## Worm's-eye View

*To be a Junior is lots of fun  
For any Junior knows how it's done.  
Let's go back and view the year,  
Take it, Master Worm; start right  
here!*

**A** is for Alphabet, that's my name.  
Let's go further, are you game?  
Each fine letter we carefully list  
Taking each one; not one has been  
missed.

**B**arrels of talent has been packed  
in **B**:  
Bechtel in sports achieved C. I. C.,  
Barnard and Ballard in beauty  
abounded,  
In other activities their talents  
were counted.

"Can't do" are never the words of  
these two,  
Wright and Chamberlain—both earn  
their due.  
Don Chamberlain in football brings  
on the cheers,  
With Dick Wright he'll live on for  
years.

**D**rumming upon her piano like mad,  
It's Lorraine Murken, what fun to  
be had.  
Also in music Elaine Hohanshelt is  
spry,  
Then there's Ruth Watkins, can't  
pass her by.

**E**legant Doris Ekstrand has so much  
—egad!  
She's got the personality we all wish  
we had.  
In Pep Club so active; in chorus she  
sings;  
Her guarding permits no ball through  
the rings.

**F**ast and furious, they set the pace,  
Mallas and Bielfelt will win the  
next race;  
All on our track team are fast and  
a-plenty,  
Deering and Forster, just two—there  
are many.

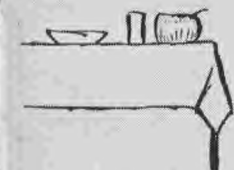
**G**ay and peppy, that is this gang,  
These gals are always off with a yell  
and a bang!  
Marvel Holmberg, Jo Comstock, and  
Alice Bass,  
Our team they fight for in a mass.

**H**ogan, a basketball champ by the  
way,  
Works hard in *Scroll* all through  
the day.  
Another M. H.—Mark Harvey this  
time,  
He's on Student Council—hard-  
working and fine.

**I**ntelligent Roger is not only smart  
For in everything attempted he does  
his part.  
The field of Science he finds fun  
And skillful in music is Roger  
Olson.

**J**ill Johnstone is in a class of her own  
Surrounded by friends, she's never  
alone.  
She swims and cheers, is interested  
in flowers,  
On her violin she practices for hours.

**K**lute and Johnson—oh, what a  
pair!  
Arlene and Jo, they're friends who  
will care.  
Anyone want his picture well  
drawn?  
Joan Duncan's the gal—from dusk  
to dawn.



Loads of work have surely been shown,  
As managers they'll never moan,  
Harold Reed, who's a brain, it's true,  
And Jim Donovan—his kind are few.

Merry the journalists, and oh, what fun  
Looking for news till the long day is done.  
Statton and Schroeder work hard all the time;  
Donna McLeod with her ads does so fine.

Nystrom and Nickell, a political clique,  
Many right answers they often do pick.  
Madelyn Nelson in music is great,  
Always scholastic—she is first rate.

Our competent officers numbering three,  
Dean Gustofson, president, working you'll see,  
Popular Art Dixon hits every score,  
As does Jo Barnes—could you ask for more?

Plays and speech round out our profile,  
Vickery and Hartsell are a few from the file.  
Proficient duet includes Honohan and Dowd  
Besides Duley and Hoffman of whom we are proud.

Quest of sports has been captured by Q  
For Q's excel in all that they do.  
Marilyn Quinn is queen of the basketball floor  
And athletic John Quigley is never a bore.

Ringing voice and a gay time for all  
As Jeanne De Hoet now enters the hall.  
A sizzling tenor who could bring no boos  
You all know that he is our Dick Hughes.

Smiling S's are seen in our halls,  
Ann Sunstrom so often attends many balls.  
Pat Sandell with her violin you'll find,  
Plus Bob Swank in sports of any kind.

Talented Lorene Collis in music we find,  
Pep Club and basketball, oh what a mind!  
A spark full of life, and business-like too,  
Is Delma Comito, tried and true.

Utmost popularity—that's the rule,  
With these three lads of our own school.  
Whitmer and Berglund, a twosome with pep,  
Also Bob Day, who's really 'hep.'

Victories accomplished by the whole Junior Class.  
We give you a smile, each lad and each lass.  
In every field we aim for the same—  
Workers, not wishers, win in our game.

Wiley, that's Rollie, in sports on the ball,  
Plays basketball, golf, with never a fall.  
Wit and Wisdom go hand in hand—  
Sally McCartney will lead our band.

X, Y, and Z this game's at an end,  
Yet it's the life of a junior we recommend.  
Next year we'll be seniors at the end of our flight,  
Yet our junior year we'll recall with delight.

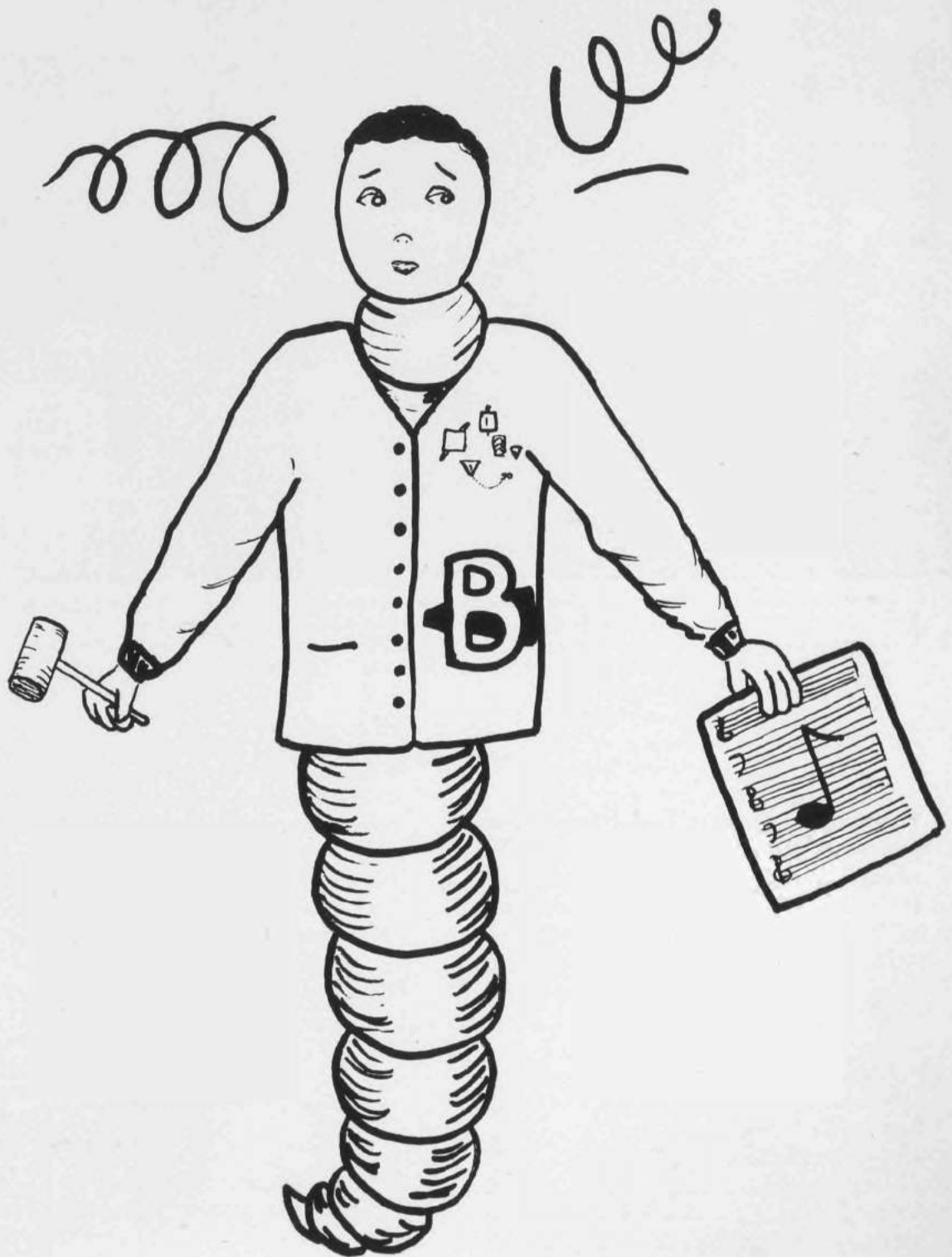


ZZZZZZ





# ACTIVITIES





Last row: Robert Harvey, Robert Powers, George Johnstone, Bernard Reid, Richard Weisgerber, James Larson. Third row: Beverly Jay, Joe Moore, Norman Lycke, Art Dixon, Robert Carpenter, Gretchen Kinter. Second row: Jack Nystrom, Delbert Whitmer, Bob Swank, Mark Harvey, Joan Logsdon, Mr. Martindale. Front row: Paul Stark, Mary Lou Petersen, Dennis Klute.

## Student Council

THE STUDENT COUNCIL carried out a successful program this year in establishing self-government among students, by developing co-operation between students and faculty, and by stimulating school spirit.

The members, one representative from each homeroom, were responsible for attending meetings and reporting activities of the meetings to their respective homerooms.

Among the projects carried out, the student council sponsored the Homecoming dance and entered a float in the Homecoming parade. They also sold football and basketball schedule pencils. Through the student council, money was collected for the Tuberculosis and Heart Disease drives. At Christmas time the council members decorated a huge Christmas tree for the school. Also, during the Christmas

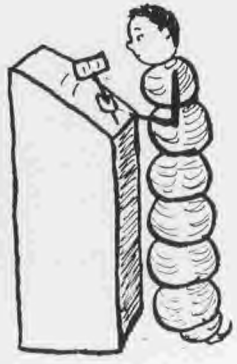
season, the council, aided by the junior high student council, collected canned food for the needy of Boone County. In the spring the junior and senior high councils jointly sponsored the "Save the Children" campaign and gathered bundles of clothing for the Navajo Indians.

Much credit should be given to Mr. C. J. Martindale, the adviser, for his able guidance.

---

Officers for the year were:  
 President, Denny Klute  
 Vice-President, Paul Stark  
 Secretary, Mary Lou Petersen

---





## National Honor Society

Back row: Dorothy Zagel, Alice Herman, Nancy Grimes, Normagene Cole, Joyce Stephenson, Charles Borg, Mary Lou Petersen, Marylene Shadle, Mari Jo Olson, Marilyn Curell, Ruanne Martin. Front row: Dick Schultz, Marilyn Miller, William Johnson, Joan Cooper, Harley Halverson, Shirley Ingalls, John Duffy, Betty Thompson.

CHARACTER, scholarship, leadership, service—these symbols of the National Honor Society are used as a basis for choosing five per cent of the members of the Junior IV, Senior V, and Senior VI Classes for membership each semester.

In a candlelight ceremony with a background of music provided by the high school orchestra and vocal department, eight students were inducted into the society January 12. Marilyn Miller and Dick Schultz were chosen from the Senior VI Class, Joan Cooper, John Duffy, Harley Halverson, Shirley In-

galls, William Johnson, and Betty Thompson from the Senior V Class.

A group of five of the members of the National Honor Society took the annual National Honor Society Scholarship test March 28. They were Nancy Grimes, Alice Herman, Ruanne Martin, Mary Lou Petersen, and Richard Schultz.

Miss Thornburgh, advisor for National Honor Society, stated that another group of students from the Junior IV and Senior VI Classes was to be initiated in May.

STUDENTS dressed as "gentlemen of the press" were seen walking through the halls one day last February. These were the new members of Quill and Scroll, an honorary organization for high school journalists. Members are chosen by the advisors of *The Bumble "B"* and *Scroll* each semester on the basis of scholarship and journalistic ability.

Shirley Vitt, Shirley Strandberg, Joan Cooper, Ione Anderson, Bill Johnson, Luene Hartsell, Joanne Barnes, Ruth Jones, Sally McCartney, Betty

Jean Cooper, and Barbara Schroeder met the requirements for membership the first semester.

A formal initiation ceremony conducted by Miss Ealy and Miss Pagel was held at the home of Nancy Grimes. Barbara Briley, President, and Dorothy Zagel, Secretary, assisted in the initiation.

Another group of students was welcomed as new members in the spring in a formal initiation ceremony.

## Quill and Scroll





# The Bumble "B" Staff



<i>Editor-in-Chief</i>	BARBARA BRILEY
<i>News Editor</i>	BARBARA BENNETT
<i>Feature Editor</i>	DOROTHY STEVENS
<i>Sports Editor</i>	SALLY MCCARTNEY
<i>Advertising Manager</i>	NORMAGENE COLE
<i>Collector</i>	MARI JO OLSON

*News Writers:* Betty Jean Cooper, Helen Diehl, Joann Johnson, Annabelle Nelson, Betty Rose, Barbara Schroeder, Betty Thompson, Shirley Vitt.

*Sports Writers:* Luene Hartsell

*Feature Writers:* John Campbell, Donald Forster, Arlene Klute, Elizabeth Schoff, Lois Statton.

*Advertising Staff:* Nina Barnard, Joanne Barnes, Shelia Browning, June Conrad, Jeanne De Hoet, Luene Hartsell, Mary Kay Hogan, Kay Honohan, DeeLoris Jacobson, Ruth Jones, Donna McLeod, Phyllis Pollard, Barbara Schroeder, Nellie Siders, Nancy Waychoff.

*Advisors:* Miss Ealy, Mrs. Martin, Mrs. Taylor.



# The Scroll Staff



<i>Co-editors</i> . . . . .	NANCY GRIMES, DOROTHY ZAGEL
<i>Advertising Manager</i> . . . . .	MARILYN CURELL
<i>Photographers</i> . . . . .	JOHN DUFFY, WILLIAM JOHNSON
<i>Staff Artist</i> . . . . .	SHIRLEY STRANDBERG

*Editorial Staff:* Barbara Briley, Joan Cooper, Alice Herman, Mary Kay Hogan, Kay Honohan, Mari Jo Olson, Mary Lou Petersen, Richard Schultz, Dorothy Stevens, Betty Thompson, Shirley Vitt.

*Advertising Staff:* Ione Anderson, Joanne Barnes, Normagene Cole, Betty Jean Cooper, Jenet Johnstone, Ruth Jones, Ruanne Martin, Nellie Siders.

*Advisors:* Miss Pagel, Miss Turner.

The *Scroll* staff wishes to thank Kenyon Hoffman for his drawings, which appear on pages twelve and thirteen.



## Chorus

THE WALLS OF THE AUDITORIUM resounded with melodious strains of music as the Boone High Chorus began its early morning rehearsal. It was Miss LouCelle Nelson, this year's capable, new chorus director, who had produced this 1950 chorus.

When the traditional Christmas Concert rolled around, the chorus and glee clubs presented their inspiring Christmas music. The entire chorus sang, "Go Tell It to the Mountains," "Carol of the Bells," "Only Begotten Son," and "Glory to God in the Highest." The Girls' Glee Club sang, "I Wonder as I Wander," with Beth Hudson as soloist. Dick Weisgerber and Dick Hughes were soloists with the Boys' Glee Club.

After Easter vacation the chorus presented their 1,000 Club Concert. The program included selec-

tions by the Boys' Quartet, composed of Dick Hughes, Harold Reed, Bill Johnson, George Wahl; Girls' Sextet, composed of Barbara Bennett, Shirley Strandberg, Shirley Ingalls, Marilee Oxenford, Marilyn Crouse, Marilyn Myers; and solos by Jeanne DeHoet and Dick Hughes. Among the numbers sung by the chorus were the "Easter Alleluia," "Cherubim Song," and "Roberta Medley."

The chorus and glee clubs entered the State Music Contest at Creston on April 21. The soloists and small groups who received a one rating at the preliminary contest held March 31 at Ogden also participated in the State Music Contest. On May 6 the winners of this contest attended the State Final Contest at Perry.

## Orchestra

UNDER THE ABLE DIRECTION of Konrad Scholl the Boone High Orchestra completed another successful season. The orchestra made its first public appearance of the year at the Christmas Concert at which the playing of Hanson's beautiful "Nordic Symphony" was outstanding. After Christmas vacation the string section of the orchestra presented a special concert which included two compositions by Mr. Scholl. It was a new experience for the orchestra members when they played for the dedication ceremony of Boone's recently established radio station, KWBC. The annual 1,000 Club Concert of the orchestra presented on February 6 was high-lighted with the playing of Haydn's "Symphony XV," Hummel's "Moods Americana," and Wagner's Prelude to Act III, "Lohengrin."

As soon as the 1,000 Club Concert was over the orchestra began to concentrate on the music contest numbers. Through the industrious efforts of all, the orchestra prepared to meet their competition in the State Music Contest held at Creston.

Several small string ensembles also entered the series of music contests. These were the string sextet composed of Jill Johnstone, Carole Nelson, Patricia Sandell, Madelyne Nelson, Tom Sandell, and Ann Sunstrom; the string quintet: Jill Johnstone, Carole Nelson, Lois Statton, Madelyn Nelson, and Alice Herman; the string trio: Roma Achenbach, Jill Johnstone, and Carole Nelson; a miscellaneous string group: Sharon Richmond, Janice Brown, Ruth McCall, Emelie Jackson, and Roma Achenbach.

## Band

THE BOONE HIGH BAND was fortunate to have as its director this year Mr. Ellsworth Baldwin. He has furthered the development of the Boone High Band into a successful organization.

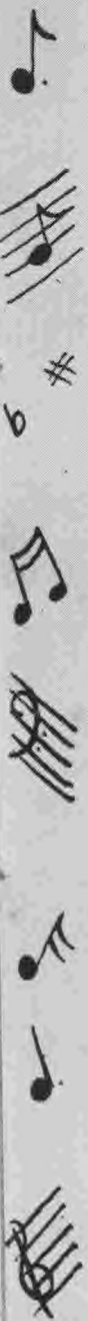
Boone High's snappy marching band brought color and half-time entertainment to all the home football games. At Marshalltown they supported our team with their vigorous marches and at the half-time presented their colorful parades. At the Boone-Ames game the bands of both schools combined in presenting their marching maneuvers.

With marching season over the Concert Band began preparation for their concert season ahead. Their first appearance was at the Christmas Concert. The band was selected to play over station KWDM on the Bands of Iowa Program, which was presented before the student body and transcribed for the broadcast. The 1,000 Club Band Concert given March 3 featured two soloists: Gary Blomquist, cornet soloist, who played "Stars in a Velvety Sky" by Clarke; and Darrell Dickey, who presented the French horn solo, "Nocturno No. 2" by Chopin. The

program also included the first movement of "Symphony in B-flat" by Fauchet, "Slavonic Rhapsody No. 2" by Friedemann, and "Perpetuum Mobile" by Strauss. Another number, "Landsighting" by Edward Grieg, was conducted by Loyd Settle.

After concentrated work on their contest selections the band entered the State Music Contest at Creston. The wind groups also taking part in this contest were clarinet quartet composed of Lorene Collis, Marilyn Johnson, Ruthanne Watkins, and Beverly Parkinson; French horn quartet: Darrell Dickey, James Munro, Donna Wade, and Elaine Moore; woodwind quintet: Elaine Hohanshelt, Maxine Sturtz, Lorraine Murken, Kathleen McCoy, and Donna Wade; brass quintet: Harold Kost, Gary Bloomquist, Richard Longworth, Darrell Dickey, and Robert Jacoby.

The officers of this year's band were President, Bill Johnson; Vice-President, Harley Halverson; Secretary, Phyllis Pollard; Librarian, Marilyn Johnson.









Cast for "The Divine Flora"

## Speech Activities

"ALL THE WORLD'S A STAGE—" and Boone High is no exception. Under the able tutelage of Mr. Glenn Pinkham and Miss Celestine Evans, Boone High students presented two three-act plays and participated in a number of other speech events.

"The Divine Flora," a comedy centered around the antics of a group of teen-agers, was presented on November 11. The cast of characters was as follows:

<i>Hal</i>	Tom Fangman
<i>Winnie</i>	Jeanne Lyon
<i>Boops</i>	Donna Walker
<i>Stu Morgan</i>	Marion Strickler
<i>Kit Olmstead</i>	Nancy Grimes
<i>Etta Dean (Flora)</i>	Kay Honohan
<i>Randy Pryor</i>	Sam Duley
<i>Mr. Pryor</i>	Dick Weisgerber

<i>Mrs. Pryor</i>	Mary Lee Vickery
<i>'Buzz' Rafferty</i>	Kenyon Hoffman
<i>Mr. Dean</i>	Don Gustofson
<i>Sharon Pryor</i>	Mary Ellen Dowd
<i>Wayne</i>	Tom Baron
<i>Bob</i>	Bob Carpenter
<i>Tex Arlen</i>	Joe Nickell
<i>Polly</i>	Lorene Collis
<i>Helena</i>	Arlene Klute
<i>Marvelle</i>	Sally McCartney
<i>Daphne Gillford</i>	Beverly Joyce Anderson
<i>Mr. Dugan</i>	Willard McCartney
<i>Susie</i>	Shirley Snyder
<i>Bella</i>	Marilyn Dugger
<i>Beverly Anne</i>	DeeLoris Jacobson
<i>Dorothy Somers</i>	Lois Statton
<i>Carol Courtney</i>	Joanne Barnes
<i>Jennie Davis</i>	Ann Sunstrom
<i>Nancy Scott</i>	Ruth Jones
<i>Vickie Jones</i>	Joan Duncan
<i>Elaine Barger</i>	Ruanne Martin

Cast for "The Jeweled Cross"



As a result of the first home contest held here on December 8, three Boone High students were entitled to enter the preliminary contest at Ogden in February. These students were Luene Hartsell, oratory; Mary Ellen Dowd, dramatic; and Tom Fangman, humorous.

The home contest for interpretive readers was held January 20. From the eighteen entries in this contest three were advanced to the preliminary contest at Ogden and two were chosen to represent Boone in the State Forensic League contest at Iowa City on April 1. Those who entered the Ogden contest were Betty Rose, Beverly Joyce Anderson, and Beverly Jay. The two who were entered in the

Iowa City contest later were Nancy Grimes and Kay Honohan.

Seven firsts were awarded to Boone at the preliminary contest held at Ogden on February 15. Those awarded firsts were Luene Hartsell, oratorical declamation; Mary Ellen Dowd, dramatic; Tom Fangman, humorous; Ruanne Martin, extemporaneous; Beverly Joyce Anderson and Betty Rose, interpretive reading; and Barbara Briley in radio speaking. Boone's one-act play, "The Jeweled Cross," also received top rating. Winners of this contest entered the pre-district at Clarion on March 7, where "one" ratings were awarded to all of them.

Members of the cast of the contest play, "The Jeweled Cross":

<i>Mrs. Dale</i>	. . . . .	Beverly Jay
<i>Miss Hime</i>	. . . . .	Jeanne Lyon
<i>Nona Dale</i>	. . . . .	Nancy Grimes
<i>Nakita</i>	. . . . .	Dick Weisgerber
<i>Anna Stransky</i>	. . . . .	Kay Honohan
<i>Alex Stransky</i>	. . . . .	Tom Fangman

District contest was held at Rolfe on March 23, 24, and 25. Entrants from Boone who won superior, or "one," ratings were Tom Fangman, Mary Ellen Dowd, Ruanne Martin, Barbara Briley, and Luene Hartsell. These students will participate in the state contest at Cresco on April 21 and 22. Because of the early date of publication of this volume, the results of this contest cannot be printed.

The seniors of Boone High presented their annual class play to a capacity crowd on March 24. The play, "Sky Road," is a dramatic comedy set in the year 1932, when the idea of stewardesses was just a stunt. Under the direction of Miss Celestine Evans, the play proved a big success.

Members of the cast of "Sky Road" were:

<i>Lucky Parker</i>	. . . . .	Nancy Grimes
<i>Bill Jones</i>	. . . . .	Tom Fangman
<i>Mabel Clark</i>	. . . . .	Doloris McAlpine

*"The Divine Flora," On and Off Stage*



*Cast for "Sky Road"*

<i>Connie Bickell</i>	. . . . .	Beth Hudson
<i>Sue Lamb</i>	. . . . .	Mari Jo Olson
<i>Midge Saunders</i>	. . . . .	Barbara Bennett
<i>Ann Rogers</i>	. . . . .	Donna Walker
<i>Carrie Adams</i>	. . . . .	Beverly Joyce Anderson
<i>Sally Barton</i>	. . . . .	Jeanne Lyon
<i>Steve Hamland</i>	. . . . .	Dick Weisgerber
<i>'Buddie' Walters</i>	. . . . .	Bill Johnson
<i>Andy Saunders</i>	. . . . .	Harley Halverson
<i>Thompson</i>	. . . . .	John Duffy
<i>Miss Fielding</i>	. . . . .	Shirley Snyder
<i>MacFarland</i>	. . . . .	Don Gustofson
<i>Voice in the loudspeaker</i>	. . . . .	Willard McCartney

Seven Boone students entered the Forensic League contest at Iowa City on April 1. These students were Harley Halverson and Luene Hartsell in radio speaking, Bill Mickle in extemporaneous speaking, Alice Herman in original oratory, and Nancy Grimes and Kay Honohan in interpretive reading. Results of this contest were also unavailable because of early publication of this volume.

On April 5, members of the drama classes presented four one-act plays to close a successful season of entertainment and achievement.







## "Y" Groups

AIDED by their advisor, Mr. John Shadle, the Hi-Y carried out the purpose of the club, "To create, maintain, and extend throughout the school and community, high standards of Christian character."

The annual hayride was held October 29, followed by a dance at the Country Club.

Reorganization was begun the second semester.

"EFFECTIVE LIVING" was the theme of the activities carried on by the Hi-Tri Club for the past year. To coincide with this idea the girls organized literature, art, religion, travel, drama, hobby, and music committees, and engaged guest speakers to further interpret their theme. Hi-Tri was under the guidance of Miss Vaughn Thornburgh and Miss Rebecca Stone. The officers were: President, Marilyn Miller; Vice-President, Beth Hudson; Secretary, Zelda Cline; Treasurer, Mary Lou Petersen; Program Coordinator, Jenet Johnstone; Publicity Chairman, Mari Jo Olson.

The decorating of a Christmas tree for a needy family exemplified the spirit shown by the members of the B-Y-ettes in the past year. The club enjoyed various other worthwhile projects including a movie of the famous Sister Kenny Method for the treatment of polio. Much credit for the success of the activities of the club was due to the sponsors, Miss Thompson and Miss Stone. First

The constitution was rewritten and officers and members for 1950 were elected.

First semester officers were: President, Bill Johnson; Vice-President, Glenn Grimm; Secretary, Bob Harvey; Treasurer, Norman Lycke; Chaplain, Gary Hessel.

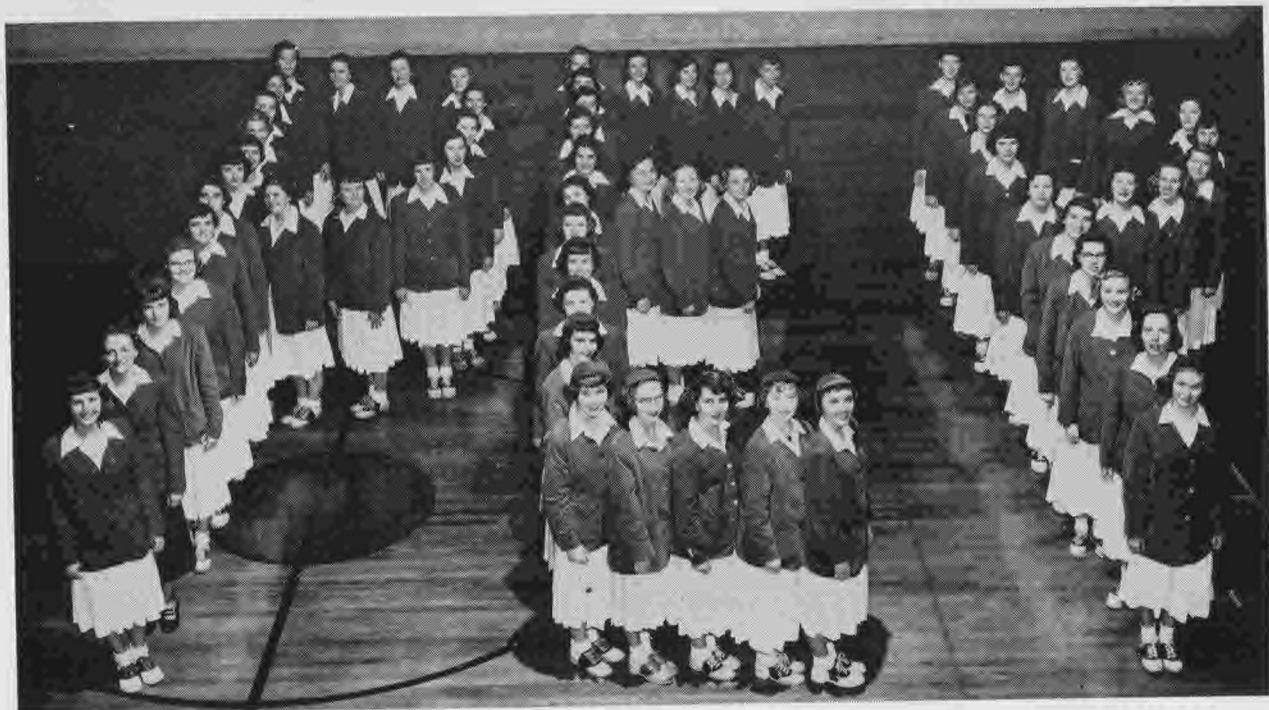
Pictured are the first semester members of Hi-Y.

and second semester officers were: President, Pat Sandell and Sally McCartney; Vice-President, Jeanne De Hoet and Elaine Hohanselt; Secretary, Joanne Barnes and Delma Comito; Treasurer, Arlene Klute and Luene Hartsell; Program Chairman, Lois Statton and Mary Kay Hogan; Publicity Chairman, Annabelle Nelson and Doris Ekstrand.

A new group, effectively named the Live Y-ers, was formed this year for Sophomore girls. Their well-rounded program included a hay ride, a talent night, and a spring style show, besides speakers on make-up and hair styles. Those responsible for creating a good foundation for the new organization were Mrs. Harriet Williams and Miss Stone. The first and second semester officers were: President, Marjorie Pesek and Gretchen Kinter; Vice-President, Joan Logsdon and Joan Hiltz; Secretary, Kathleen McCoy and Marilyn Parisho; Treasurer, Pat Peterson and Dorothea Thompson; Membership, Dorothy Gay and Colleen Casserly; Devotions, Marilyn Hartman and Marilyn Dugger; Program, Janice Nelson and Corliss Capps.







First letter, lower left: Meyers, Miss Hicks (adviser), Nelson, Hudson, Lyon, Hogan, Jay, Ballard, Collis, Doran, Bennett (sr.), Ekstrand, Hartsell, De Hoet, Knudsen, Jones, McLeod, Herman, Oxenford, Walker, Miller. Second letter, lower right: Burlingame, Fitzgerald, Cowhick, Honohan, Kinter, Dugger, Olson, Cooper, Atherton, Barnes, Gustofson, Grimes, Hiltz, Sandell, Munsell, McCartney, Petersen, Murken, Anderson, Duncan, Johnson, Vitt. Third letter, lower right: Statton, Martin, Sunstrom, Enquist, Bennett (so.), Stotts, Shadle, Stevens, Cline, Schroeder, Crouse, Dowd, Krug, Miller, Klute, Mallicoat, Curell, Briley.

## Pep Club

"ALWAYS PEPPY" was the motto in every activity of our Pep Club this past year. The Pep Club is an organization formed to give moral support to the various athletic teams throughout the year and to contribute to the service of our community and school.

Reorganization took place early in the fall, enlarging the club to sixty members. With all of the new members, the informal initiation was a colorful one. Attired in nightshirts, and each carrying a candle, the initiates experienced a day which will be long remembered.

After things quieted down, the girls concentrated on making Homecoming of 1949 the biggest ever.

Their efforts were rewarded when everyone agreed that the bonfire and parade had been a huge success.

The members gave service by collecting funds for polio and heart disease, by acting as ushers at the games, and by taking charge of concessions at some of the local athletic events.

Besides putting on skits at the pep meetings, the members of the club were hosts at a dance after the Ames basketball game.

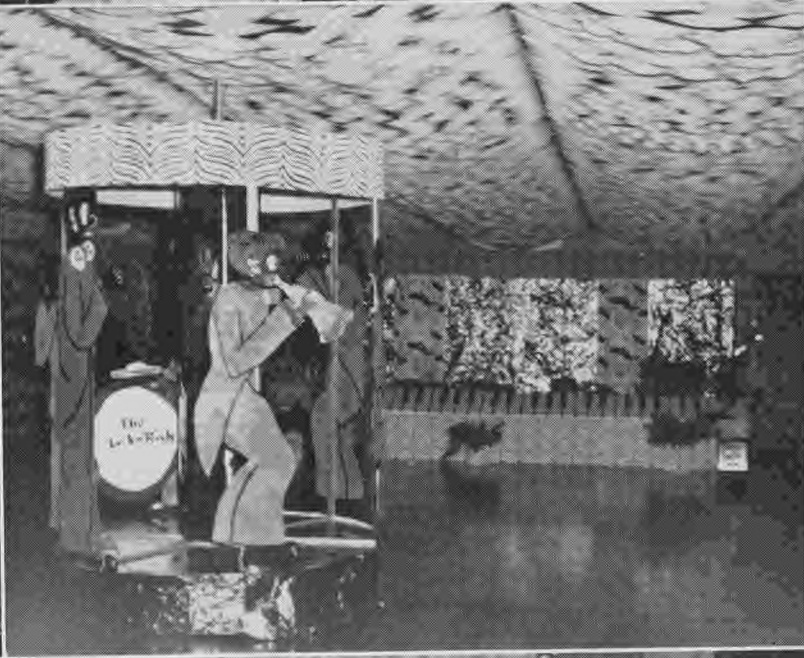
The officers for the 1949-1950 season were: President, Mary Lou Petersen; Vice-President, Marilyn Miller; Secretary, Marilyn Curell; and Historian, Beverly Joyce Anderson. Advisors were Miss Hicks, Miss Swenson, and Miss Long.

## Cheerleaders

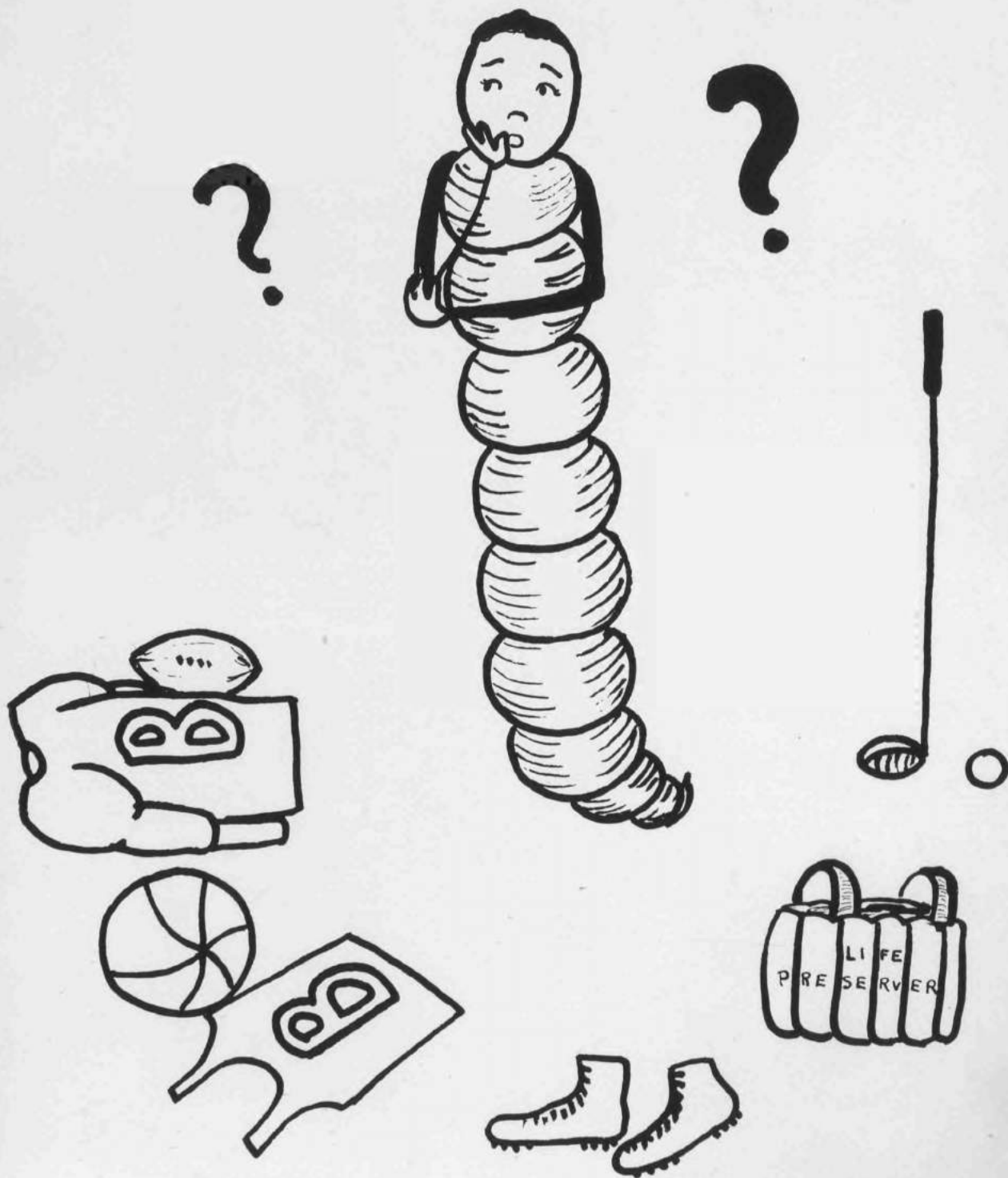
Center back: Bob Jensen. Second row: Nina Barnard, Jenet Johnstone. First row: Jill Johnstone, Don Diehl, Carole Nelson.







# ATHLETICS





Top row: *Larry Davis, Don Krug, Harold Nelson, Warren Morris.*  
 Bottom row: *Denny Klute, Bob Powers, Arlo Grimm, Harold Trites, Melvin Mitchell, Dale Larson, John Adamson, Don Gustofson, Norman Lycke.*

Football Schedule	
BOONE	OPPONENTS
0	Franklin, Cedar R'p'ds 14
0	Webster City 0
21	Oskaloosa 6
13	Marshalltown 32



*Coaches: L. K. Lewis, Larry Owens*

Football Schedule	
BOONE	OPPONENTS
36	Grinnell 0
6	Carroll 7
6	Newton 6
14	Ames 14

# 1949 Football

THE POWERFUL Franklin eleven of Cedar Rapids defeated the fighting Toreadors in the first game of the 1949 season, but it was not until the second half that the heavier and more experienced Franklin team was able to cross the Toreadors' goal. The final score was 14-0 in favor of Franklin.

The Toreadors literally scalped the Oskaloosa Indians when, in their first conference game they won a 21-6 decision. Powers went over for two of Boone's touchdowns and Gustofson for the other.

Regardless of the fact that the locals showed championship form the Bobcats of Marshalltown proved too much for the Toreadors. Three Bobcat touchdowns in the third quarter cost the locals their first conference defeat by a 32-13 score.

A much superior Boone team tamed the Grinnell Tigers 36-0 for Boone's annual Homecoming game. Morris was outstanding in this game, scoring three out of five of Boone's touchdowns. Adamson thrilled the Homecoming crowd by snaring a pass in the end zone while lying flat on his back. Unfortunately it was called back because of a penalty.

A determined Toreador eleven forced a strong Carroll team to come from behind in the second half to win 7-6. A brilliant pass combination of Morris

to Bechtel was good for seven out of eleven passes.

Evenly matched Boone and Newton elevens fought to a 6-6 deadlock. Adamson was a big threat against Newton with his vicious tackling. Powers scored the Boone touchdown and Harold Nelson stood out defensively.

Boone forced Ames to come from behind to earn a 14-14 tie in the biggest game of the year. Boone may well be proud of the Toreadors for their performance. Credit cannot be given to any individual for his performance, but it could be given to the two Boone coaches, Larry Owens and 'Butch' Lewis, who inspired the Toreador eleven.

In the last game of the year, Boone dropped a hard fought battle to Fort Dodge, 6-0.

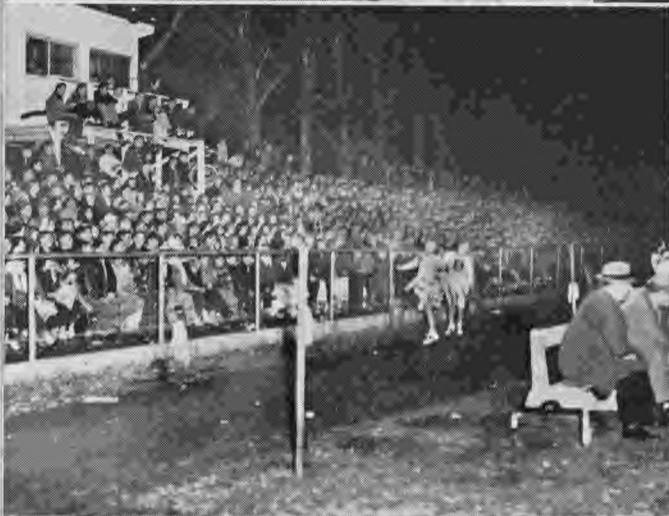
Glenn Grimm and 'Butch' McCartney received injuries early in the season and were greatly missed by the team.

Five Boone boys earned a position on Jack North's Honor Roll. They were Warren Morris, Dick Bechtel, Dale Larson, John Adamson, and Harold Nelson. Warren and Dick also earned a place on the first all-conference team. Honorary co-captains elected by the members of the team for the year were Dale Larson and John Adamson.

Back row: Crary, Knox, Donovan (managers); Owens (coach), Lewis (line coach). Fifth row: Schwartz, Gunder, Knowles, Adamson, Don Chamberlin, Nelson, Johnstone, Maynard. Fourth row: Kaness, Day, Dick Chamberlin, Mallas, Gustofson, Quigley, Larson, Deering. Third row: Whitmer, Clark, Reid, Forrester, Bielfelt, Powers, Klute. Second row: Warrington, Berglund, Bechtel, Lycke, Trites, Morris. First row: Krug, Davis, A. Grimm, Wright, Mitchell, Smith.







## Queen

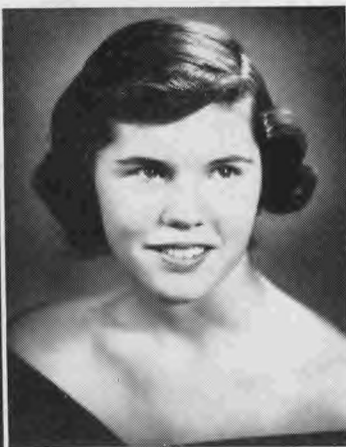


*Joan Burlingame*

## Attendants



*La Donna Ballard*



*Nina Barnard*



*Jenet Johnstone*



*Ann Sunstrom*

## Homecoming

HOMEcoming was a gala event highlighted by the crowning of the queen, Joan Burlingame. For weeks Boone High had been anxiously awaiting the day. Finally, after a busy and exciting week during which the traditional snake-dance and bonfire were held, the day arrived. After the coronation of the queen, a colorful parade was held with twelve floats participating. The enthusiasm of the day was climaxed when the Toreadors trounced the Grinnell Tigers, 36-0. A record crowd attended the dance given by the Student Council in the gym following the game.



Back row: Reed, Dixon, Mallas, Bielfelt, Maynard. Second row: Richards, A. Grimm, Swank, Deering, Knowles, Harder.  
 First row: Johnson, Morris, Stark, Bechtel, Powers, Nelson, Wiley.

## Boys' Basketball

THE BASKETBALL SEASON of 1949-1950 was truly a successful one. With only four seniors on the squad, Coach Gale Johnson was forced to rely on inexperienced men for reserve strength. However, the boys played like seasoned veterans from the start, and were instrumental in carrying Boone to a record of fourteen victories and six defeats. Boone engaged in several close ball games, including three of the double-overtime variety, and played a crowd-pleasing brand of basketball throughout the season.

The Toreadors whipped Nevada 39-34 in the opening game as a tune-up for their first C.I.C. game with Marshalltown. Boone led all the way to down the Bobcats 41-37.

After a breather with Webster City the Toreadors renewed their old rivalry with Ames. Led by Bob Powers, the Boone five defeated Ames for the fifth straight time, this one by the score of 45-41.

Unbeaten Newton came to town intent on taking over leadership in the conference. However, the locals had other plans and gave the Cardinals their worst drubbing of the year, 39-27. Forest City, last year's second place winner in the state finals, also got a taste of Coach Johnson's basketball medicine. Victory Number Six was accomplished, 36-32.

After starting the New Year off right with an easy victory over Carroll, the Toreadors met a tall, rugged Grinnell team. Roland Wiley sparked a second half rally with seven points in less than two minutes and Victory Number Eight was in the bag by the score of 49-46.

The Oskaloosa jinx still prevailed and the Toreadors went down to their first defeat of the season, 60-39. Back on the right track with a 44-36 win over Perry, Boone traveled to Marshalltown to do battle with the Bobcats. Once again, led by the cool play of high-scoring forward, Bob Powers, the locals were victorious 47-43. As Bob was a mid-year student, that was his last game for Boone High, and a fitting climax to a great basketball career.

Carroll was again defeated with the count of 54-29. Ames could not halt the Toreador surge and was

defeated, 52-42. Dick Bechtel and Warren Morris were the standout Boone performers in this game.

Perry proved hard to handle, but Coach Johnson's quintet was victorious by Bechtel's basket in the second overtime.

Boone received its worst defeat of the season as an inspired Newton outfit poured it on to the tune of 56-31. This was followed by a heart-breaking, two-overtime loss to Grinnell. Bonyata's long shot that split the cords settled the issue in favor of Grinnell, 47-45.

Another loss to Oskey closed the conference season for the locals, who wound up third with six victories and four losses. The score of this one was 39-38, for Oskey. A powerful Cedar Falls club became the only non-conference foe to whip the Toreadors this season. Boone's second half rally fell short, and C. F. was victorious, 47-42.

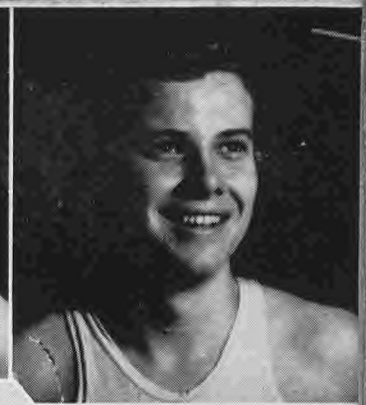
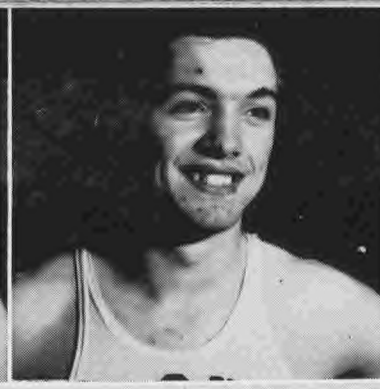
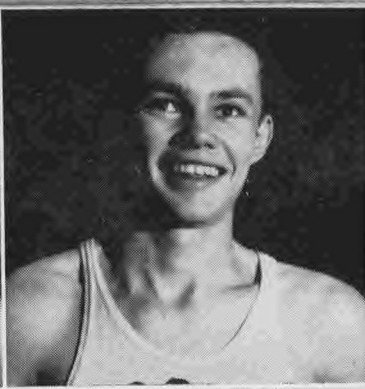
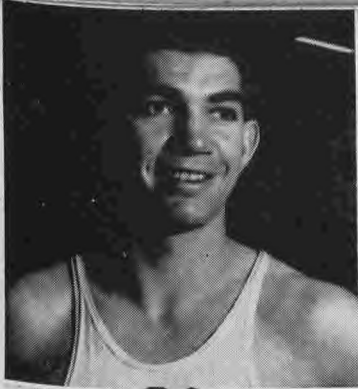
In the highlight game of the season, the Toreadors downed Fort Dodge in two overtimes. The Dodgers were ranked Number Two in northwest Iowa and were the only team to beat East Des Moines this year; however, the Boone five paid no attention to the press notices. Harold Nelson's clutch basket in the second overtime gave the verdict to Boone 53-51.

Moving into tournament play, the traditional foe, Ames, provided the opposition. Boone started slowly and could not catch up. A ten-point last quarter rally was cut short by the hated three-minute rule, which allowed Ames to mesh seven free throws and win 45-36.

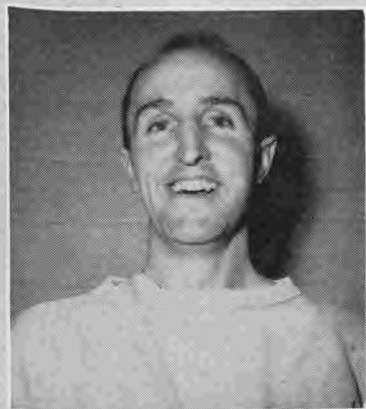
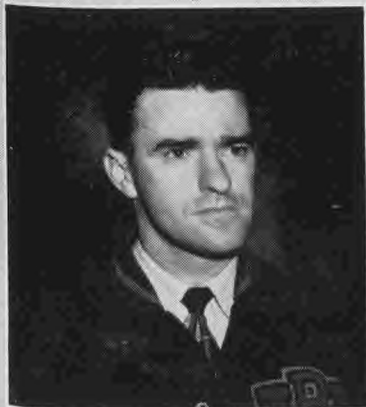
Thus ended the 1949-1950 basketball season.

With the season over, several Boone boys received high individual honors. Paul Stark was selected as a first-team forward on the all-conference squad, while Dick Bechtel and Harold Nelson were given second-team ratings. Bob Powers was given honorable mention, but undoubtedly would have made the first team if he had been able to play the full season. Once again our congratulations go to the coach, Gale Johnson, and the 1950 Toreador basketball team.





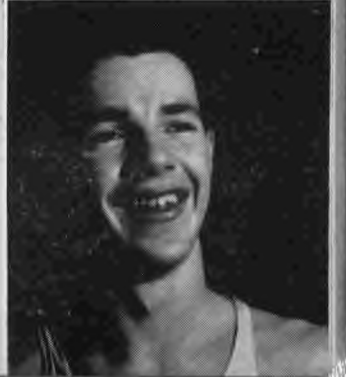
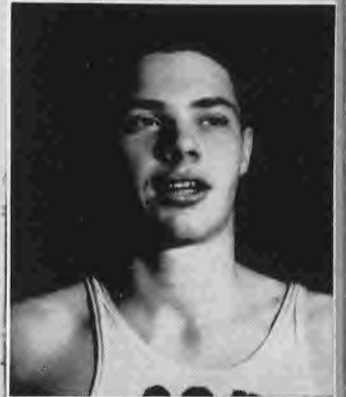
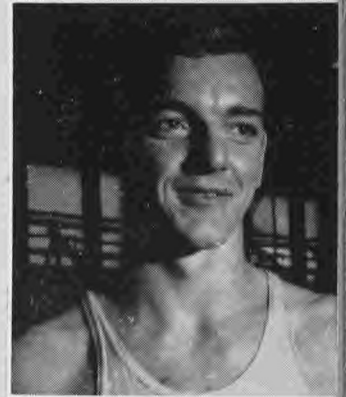
Above: Powers, Wiley, A. Grimm, Stark  
 Right column: Bechtel, Harder, Nelson, Morris



### BASKETBALL RECORD 1949-1950

Boone . . .	39	Nevada . . .	34
Boone . . .	41	Marshalltown	37
Boone . . .	44	Webster City .	21
Boone . . .	45	Ames . . . . .	41
Boone . . .	39	Newton . . . .	27
Boone . . .	36	Forest City . .	32
Boone . . .	69	Carroll . . . .	51
Boone . . .	49	Grinnell . . . .	46
Boone . . .	39	Oskaloosa . . .	60
Boone . . .	44	Perry . . . . .	36
Boone . . .	47	Marshalltown	43
Boone . . .	54	Carroll . . . .	29
Boone . . .	52	Ames . . . . .	42
Boone . . .	40	Perry . . . . .	38
Boone . . .	31	Newton . . . .	56
Boone . . .	45	Grinnell . . . .	47
Boone . . .	38	Oskaloosa . . .	39
Boone . . .	42	Cedar Falls . .	47
Boone . . .	53	Fort Dodge . .	51

The Coaches: Johnson (above), Stutzman (below)  
 Sophomore Squad



# Golf

WITH A NUCLEUS of four returning lettermen, the Boone High linksters again took their place as one of the golfing powers of the state. Coach Gale Johnson had hopes for a successful season with Clayton Moffitt, Bill Johnson, Roland Wiley, and Duane Du Bois leading the way.

Meets were scheduled with Roosevelt and East of Des Moines, Oskaloosa, Marshalltown, Ames Invitational, the conference, district, and state meets.

In addition to the lettermen, other members of the team were: Dick Canady, Dick Weisgerber, Bert Deering, John Musser, Perry Spies, and Dick Longworth.



Back row: Dick Schultz, Roland Wiley, Bill Johnson, Bert Deering, John Musser, and Coach Johnson. Front row: Clayton Moffitt, Dick Canady, and Duane Du Bois.

# Track

WITH THE RETURN of warm weather, track once again took a prominent part in the Boone High athletic schedule. Coach Howard Stutzman had an impressive array of talent, including eight major lettermen and ten minor letter winners.

Glenn Grimm, Melvin Mitchell, and Harold Nelson gave Boone strength in the dashes, while Dick Bechtel, Don Krug, and Kenny Mallas were expected to pile up points in the longer distances.

Weight men included Dale Larsen and Don Chamberlin.

Since our new track was not finished in time, all the meets had to be scheduled away from home. It was a disappointment to many students who were thus deprived of their chance of seeing the 1950 track team in action, but the squad came through in true Toreador style and gave Boone another winning season.

Left to right: Melvin Mitchell, Dick Bechtel, Harold Nelson, Glenn Grimm, Arlo Grimm.



Left to right: Don Gustofson, Norman Lycke, Willard McCartney, Kenny Mallas, Dale Larson, Coach Stutzman.

Left to right: Warren Morris, John Maynard, Ross Bielfelt, Art Dixon, Bob Swank, Paul Winans.





Standing: Warren Otis, Gary Weston, John Meyers, Tom Canfield, Brad Carswell, Roger Wisecup, Joe Moore, Milton Mattson, Marlyn Wiemer, Darold Elliott, John Campbell, Dennis Shafer, Bill Otis, Larry Owens. Sitting: Jerry Smith, Bob Jensen, Bob Dahl, Ed Trites, Don Diehl, Don Ades.

## Swimming

COACH LARRY OWENS' tankmen competed in several dual meets during the season, but it was in the state meet that the boys showed fine form. The team took fourth place in this meet. It was Jerry Smith, Bob Dahl, and Bob Jensen, all seniors, who swam the 180-yard relay in 1:45.9 to capture first place. The locals also took fifth place in the 160-yard relay, and Bob Jensen was fifth in the forty-yard free style.

Sophomores and juniors played a prominent part on the team this year. Milton Mattson, Donald Ades, John Campbell, Denny Shafer, and Brad Carswell will return to brighten Boone's prospects for next year.



## "B" Club

THIS YEAR saw the organization of the Boone Lettermen's Club, made up of the major lettermen in the various athletic fields of Boone High School. Two initiations were held, one in September and another at the close of the basketball season.

The purpose of the club is to encourage better unity and co-operation among the athletes, increase the efficiency of our athletic teams, and maintain and uphold the principles of a good athlete.

The members are: John Adamson, Dick Bechtel, Jim Berglund, Howard Brown, Floyd Crary, Duane Du Bois, Arlo Grimm, Glenn Grimm, Bob Jensen, Bill Johnson, Don Krug, Dale Larson, Kenny Mal-

las, Melvin Mitchell, Clayton Moffitt, Warren Morris, Harold Nelson, Bob Powers, Harold Runyan, Dick Schultz, Jerry Smith, Paul Stark, and Roland Wiley.

The new initiates are: John Campbell, Don Chamberlin, Larry Davis, Doug Gunder, Don Gustofson, Paul Harder, 'Bricky' Johnstone, Kenny Kaness, Denny Klute, Norman Lycke, Willard McCartney, John Maynard, John Quigley, Denny Shafer, Willis Swartz, Harold Trites, Dick Wright.

The officers are: President, Paul Stark; Vice-President, Glenn Grimm; Secretary, Dick Schultz; Treasurer, John Adamson.



First row, left to right: Marilyn Quinn, Sally McCartney, Faye Rogers, Shirley Ingalls, Doris Ekstrand, Lorene Collis, Joanne Morris. Second row: Eugene O'Toole (coach), Bonnie Reid, Janice Nelson, Ruth Rogers, Marilyn Gustofson, Mary Kay Hogan, Janet Main, Helen Stotts, Shirley Grant, Dorothy Long, Marilee Oxenford (manager).

## Girls' Basketball

WITH THE RETURN of five major and four minor letter winners the girls' basketball team, under the direction of their new coach, Eugene O'Toole, started practice early in October. Throughout the season the girls showed spirit and skill in their play, and at the end of the season they had eleven wins and six losses on their record.

In their first game the locals fell before a more seasoned Gowrie sextet; Shirley Ingalls and Sally McCartney showed their future power as they did top-flight jobs in their respective positions. The locals showed much improvement as they came from behind to swamp Eldora, 35-26, in their second game. With our reserves playing most of the game because of the county tournament, Boone was defeated by Grand Junction.

Fighting to the finals in the county tournament by handing defeats to Pilot Mound and Madrid, the girls were pitted against an old enemy, Napier. Losing Faye Rogers and Marilyn Quinn early in the game proved fatal as Boone was forced to bow to Napier by a 58-38 score.

The next three games were victories for the Toreadorettes as they rolled over Luther, Jordan, and Ogden; however, their winning streak was broken

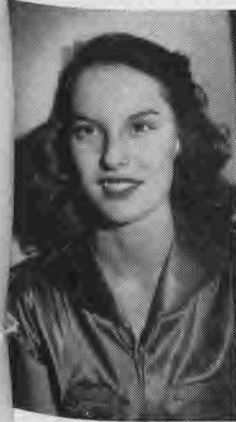
when they lost to Coon Rapids in a 37-35 thriller.

Playing in one of the most rugged sectionals of the state, Boone battled in four games at Stratford. The entire squad saw action as they defeated Blairsburg in the first game. Taking Gilbert in their stride the locals advanced to the semi-final round of play. Jewell, with their excellent long shots, pushed Boone out of the tournament. Meeting Stratford in the consolation game, Boone fell before this highly rated team, 58-63, to end their tournament play for the year.

Although unable to gain a sectional crown the Toreadorettes went on to smash two sectional champs in their following games. In a nip-and-tuck game with Fernald the locals were the victors by a 33-29 score. When traveling to Coon Rapids the team proved themselves capable of laying away another champ as they avenged an earlier loss to beat Coon Rapids 42-35. To victoriously close their season, Boone whipped Grand Junction, 51-26.

It would be hard to name a star, as all the team worked together as a unit. However, the hook shots of Faye Rogers will be missed in the front court as will the able guarding and pass interception of Shirley Ingalls and Helen Stotts in the back court.

# Girls' Basketball *m. Quinn*



Shirley Ingalls



Helen Stotts



Joanne Morris



Marilyn Quinn



Sally McCartney



Faye Rogers

## Dolphin Club

BRINGING PARIS TO BOONE in the form of their annual show, the Dolphin Club presented "A Gay Day in Patee," on May 9 and 10. Since October the pool had been filled with busy girls who performed kips, front and back dolphins, and other stunts.

Miss Shirley Long acted as the new adviser. Jenet Johnstone headed the club, while Jill Johnstone and

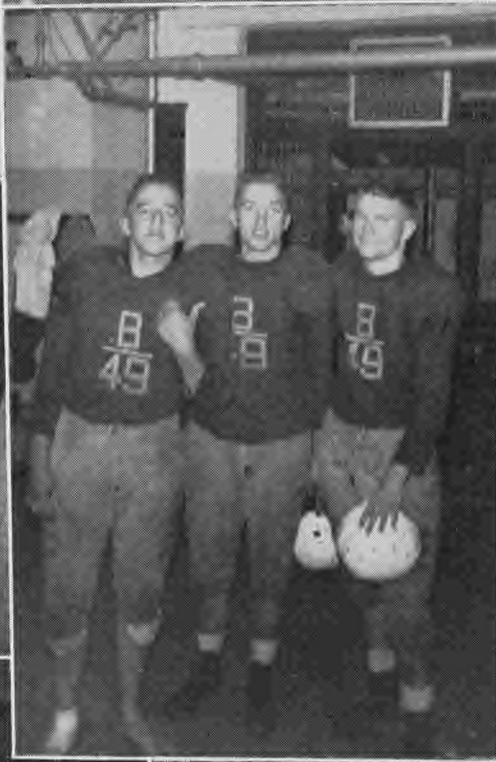
Kay Honohan acted as Vice-President and Secretary-Treasurer, respectively. In the fall, a reorganization program was undertaken with thirteen probate members being added to the rolls.

Everybody took an active part in forming this year's Dolphin Club and making the show successful.

Back row: Joan Enquist, Barbara Bennett, Carol Miller, Janet Todd, Dorothy Gay, Doris Krug. Second row: Mary Kay Hogan, Nina Barnard, Jill Johnstone, Janet Johnstone, Carole Nelson, Sue Sovereign. Front row: Donna Whitaker, Carolyn Herman, Mary Longworth, Joyce Williams, La Donna Ballard, Martha Minson, Joyce Roberts, Margaret Nowels, Marilyn Dugger.







# Our Year

## SEPTEMBER—

- 6 Our vacation comes to a brutal end as we trudge back to school.
- 7 With the Grid's opening, we look forward to the football season.
- 12 We are ready for our first vacation while the teachers attend a convention.
- 13 Our old friends, the state tests, make us realize that school is really in full swing.
- 15 The first assembly of the year features F. Sjobiarn, the pianist. Oh, to play like that!
- 21 The Live Y-ers, a new "Y" group for sophomore girls, is formed.
- 27 The physical education classes learn about alcohol and its effects.

## OCTOBER—

- 4 The first in the series of character education assemblies is presented, and on this same day some queer looking creatures roaming the halls turned out to be only the forty-two new initiates for Pep Club. Anyone like some candy?
- 7 Homecoming! A gala day of exciting events—the crowning of the queen, the parade, the thrilling game, and then the dance.
- 17 With the members of the staff selling like mad, the *Scroll* campaign gets under way. Alvin Schmitt, the head pianist at Drake, gives a concert under the auspices of the 1,000 Club.
- 19 We thrill to the strains of Rubinoff and his violin, sponsored by the Chamber of Commerce.
- 24 The General Motors show glorified the kitchen. Has anyone tried frying an egg without heat?
- 28 The worm turns, but good! Boone ties Ames 14-14.
- 29 A night of fun and gaiety is provided by the Hi-Y at their annual hayride.

## NOVEMBER—

- 2 An assembly by Richard Carson makes us more appreciative of good literature.
- 8 Parents are given an opportunity to visit our teachers as open house is held during American Education Week.
- 11 Presentation of "The Divine Flora" and the Armistice Day Program make a busy but enjoyable day for all.
- 11 The Pep Club girls experience the more dignified portion of their initiation at a lovely banquet.
- 16 Elzra Bown presents a program for assembly, demonstrating his phenomenal memory abilities.
- 22 The Black Hills Passion Play proves to be one of the outstanding events of the year. Remember the camels?
- 24-25 Vacation for Thanksgiving. Happy days are here again!
- 25 A group of us attend All-State Music Festival at Des Moines.

## DECEMBER—

- 1 The boys of the senior high meet with representatives of the Fisher Body Guild. Some girls still can't figure out why they get all the literature from Fisher's.
- 2 Our old friend, C. E. Jones, explained to us "The Dance of Electrons."
- 5 Mr. Scholl gives his annual concert of violin music which is always enthusiastically received.
- 8 Home declamatory contest takes place.
- 9 Happiness reigns. We lick the Little Cyclones, 45-41.
- 18 At the Christmas program the lovely music puts us all in the mood for the yuletide season.
- 23 Christmas vacation starts for ten days of freedom and fun!

## JANUARY—

- 3 School reconvenes and the battle is renewed!
- 9 A movie acquainting us with life on the Drake campus is presented by Mr. Martin.
- 11 The Petrie Woodwind Group presents a concert. Music, music, music!
- 12 A proud day for all the initiates of the National Honor Society.
- 18 Semester exams! Oh, woe!
- 23 End of the first semester. One leg of the journey over.
- 25 Our high school band broadcasts over the "Bands of Central Iowa."
- 26 A startling movie on fire prevention is shown that makes us sit up and take notice.
- 27 Somehow we can't help but feel that another victory over Ames makes a fitting and happy end to the first month of the new year.

## FEBRUARY—

- 6 The 1,000 Club presents the orchestra under the direction of Mr. Scholl.
- 7 The "B" Club game between business men and farmers and business men and faculty provides a lot of laughs for everyone, including the players.
- 27 The mighty Iowa State Teachers Band presents a concert for the student body.

## MARCH—

- 1 The Melody Four gives a variety program with Swiss bells, piano solos, and singing.
- 3 The high school band presents its concert under the direction of Mr. Baldwin.
- 8 Social studies and scientific tests are given to the senior high to find out how well we've been taking advantage of newspapers and magazines.
- 17 The Live Y-ers preview, by means of a spring style show, the fashions of the Easter season.
- 24 The Senior Class play, "Sky Road," is well received. What is a beam, anyway?
- 30 Hidden talent is discovered when the faculty give their assembly for the school after the students cooperate in bringing bundles of old clothes for the needy.
- 31 Augustana Seminary Choir gives a beautiful presentation of sacred music.

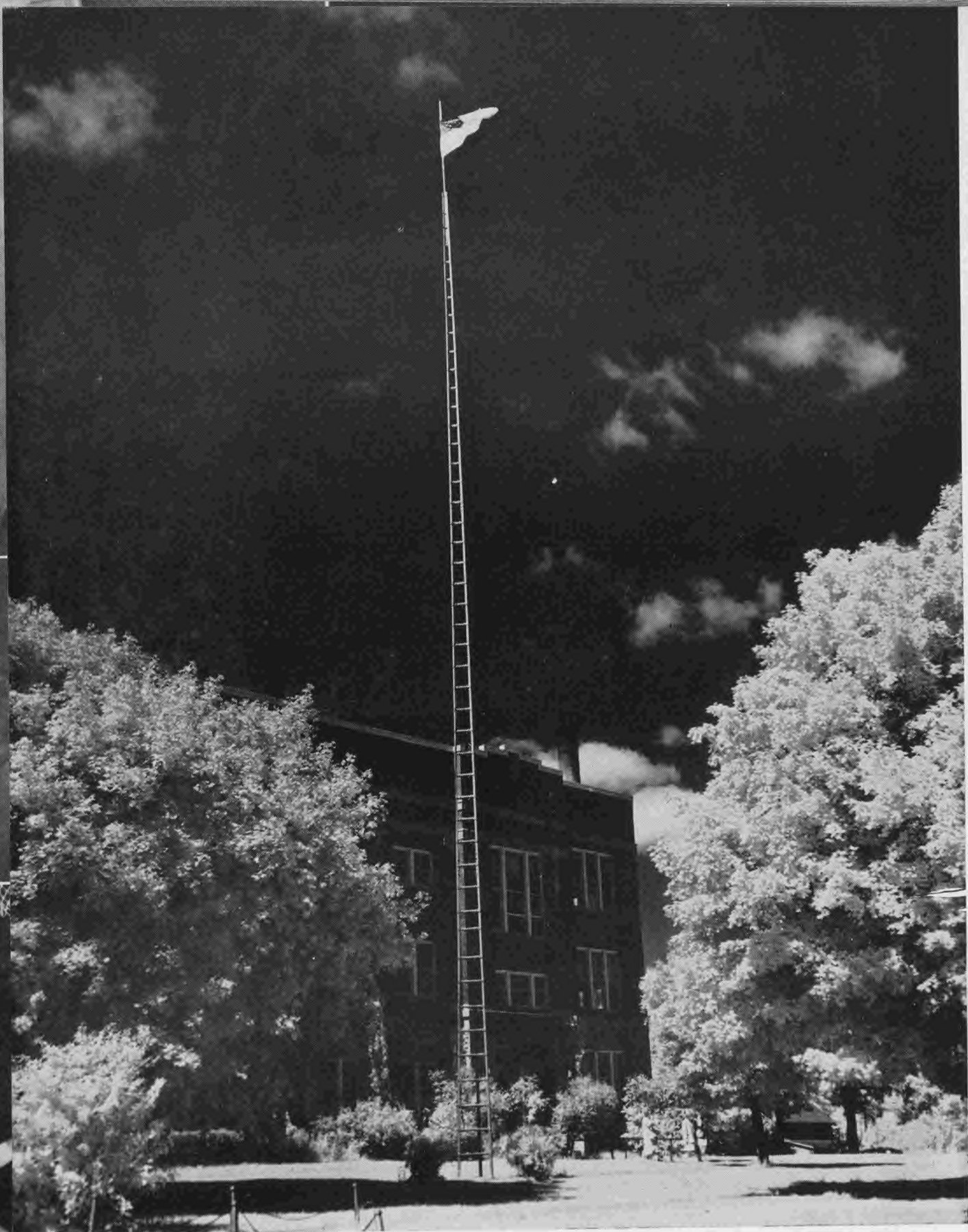
## APRIL—

- 1 Instrumental and vocal soloists and ensembles appear at Ogden at the preliminary music contest.
- 3 Kenneth Strickpacken shows us how to make sound from light rays. No shocks for the girls!
- 5 After hard work for all, the drama class gives a night of one-act plays for the public.
- 7 After winter gives a final half-hearted attempt at a snow storm, we enjoy spring vacation and use it to store energy for the last struggle.
- 12 The high school choir presents its concert under the direction of Miss Nelson.
- 18 The 1,000 Club closes its season of concerts with the appearance of the Drake Choir.
- 24 George De Matt shows us the art of juggling.

## MAY—

- 5 Jan Hollander talks to us on international affairs.
- 16 A never to be forgotten night! How we danced. The Prom.
- 24 Senior Class Day and picnic—another step toward the end—one last fling.
- 25 Senior exams. Our last, thank goodness!
- 26 Seniors dismissed. "Parting is such sweet sorrow."
- 31 Commencement. Frank Miles is the speaker. It is all over; now we strive to "Attain the unattainable."





*"Memory is the treasurer of the mind"*

WISHING SUCCESS ALWAYS  
TO ALL MY BOYS AND GIRLS  
of the 1950 Graduating Class

**BERNIE'S House of Flowers**  
822 Seventh Street Telephone: 388

**REEDHOLM'S**  
*The Store of Good Hardware at Right Prices*

—\* TELEVISION \*—

STOVES RADIOS WASHERS

705 Story Street Boone, Iowa

**NELSON SONS**  
LUMBER PAINT  
Since 1882

**NOAH G. HOLBROOK**  
PLUMBING & HEATING

Oil Burner Service and Repair

Electric Pumps

924 Eighth Street Telephone: 902

**JOHN C. HERMAN, M. D.**  
Clinic Building  
Telephone: 76

RADIOS ELECTRICAL APPLIANCES

**EFKAMP RADIOS**  
Sales and Service

1018 Eighth Street Telephone: 239

CONGRATULATIONS, SENIORS!  
**BOONE DAIRY, INC.**

*The Home of*  
FINE DAIRY PRODUCTS  
*and*  
YOUR PERSONAL PAPER  
MILK CONTAINER

CONGRATULATIONS,  
SENIORS . . . .

*from*

**FOLTZ STUDIO**  
720½ Story Street  
Boone, Iowa

COMPLIMENTS OF  
**BOONE COUNTY ABSTRACT  
& LOAN COMPANY**  
JOSEPHSON BROS.

Telephone: 589  
819½ Eighth Street Boone, Iowa

CONGRATULATIONS, SENIORS!  
And Best Wishes to You  
**CARDINAL CLEANERS**

Telephone: 131  
909 Eighth Street Boone, Iowa

**LAUNDROMAT**  
**HALF-HOUR**  
**LAUNDRY**

917 Eleventh Street Telephone: 353

—❖ QUALITY BRANDS ❖—

**WESTER FURNITURE**  
*Our Low Overhead Means*  
*Savings to You*

920 Sixth Street Telephone: 241

**McCASKEY'S CAFE**  
**FOUNTAIN SERVICE**  
716 Story Street

D-X MOTOR FUEL D-X MOTOR OIL

**TOWN-TALK SERVICE**  
*"Where Service Is a Pleasure"*  
Ninth and Allen Streets

E. A. HARTEN BOB ANDERSON

**THRIFTWAY STORES**  
WHERE the WISE  
ECONOMIZE

928 Seventh Street 1110 Story Street



*Clothing for Your Children*

**DR. KENNETH COLLIS**  
DENTIST

801½ Story Street Telephone: 70

Check the Amount of Your Insurance  
Against Today's Values!

**ROBT. McBIRNIE**  
**INSURANCE AGENCY**

Telephone: 265  
721½ Story Street Boone, Iowa

**FOR VISUAL CARE**  
Make an Appointment with  
**DR. A. A. GROVE**  
OPTOMETRIST  
(Above Bowman's Store)

802½ Story Street Boone, Iowa

Sporting Goods Major Appliances



**RALPH CORBIN, Owner**  
Telephone: 460

Hardware Auto Supplies

**QUINN PHARMACY**

*"In Business for Your Health"*

WE CAN FILL YOUR  
PRESCRIPTIONS

715 Story Street

Boone, Iowa

**GOODYEAR**

**SERVICE STORES**

CAR AND HOME SUPPLIES

Seventh and Boone Streets Telephone: 123

SAFEGUARD YOUR HEALTH  
USE  
PEERLESS PASTEURIZED  
DAIRY PRODUCTS

*Consistently the Best!*

**THE PEERLESS DAIRY, INC.**

**CARSWELL MOTORS**

DE SOTO : PLYMOUTH

Boone, Iowa

Telephone: 333

706 Allen Street

**FISHER'S SHOE STORE**

FINE FOOTWEAR  
FOR  
THE FAMILY

*"Put Your Feet in Our Hands"*

**MEYERS**

**CLOTHING COMPANY**

Corner of Eighth and Story Streets

**BEN FRANKLIN STORES**

5¢ and 10¢ \$1.00 and up

Nationally Known : Locally Owned

**BOONE MARBLE WORKS**

*"Creators of Distinctive Memorials"*

712 ARDEN STREET

BOONE, IOWA

Established 1877

Telephone: 243-W

**DOCTORS**

**M. B. PARKS & J. E. NUTT**

OPTOMETRISTS

723½ Story Street

Boone, Iowa

**CONGRATULATIONS!**

**WHITE'S**

*The Store of Fashion Fame*

READY-TO-WEAR

ACCESSORIES



<p style="text-align: center;"><b>LOANS</b>  <i>For Worthy Purposes to Employed People</i>            COURTEOUS SERVICE  <b>KNODLE FINANCE COMPANY</b>  <i>Boone Owned—Boone Operated</i></p>	<p style="text-align: center;"><b>HAWKEYE MOTORS, INC.</b>              FORD : MERCURY : LINCOLN              525 Story Street                      Telephone: 227</p>
<p style="text-align: center;"><b>DRS. LONGWORTH &amp; WICKS</b>              Office            CITIZENS NATIONAL BUILDING            Telephone: 134</p>	<p style="text-align: center;">MAKE THIS FRIENDLY BANK            YOUR BANK    <b><i>The</i> CITIZENS            NATIONAL BANK</b>              Member Federal Deposit Insurance Corporation            Member Federal Reserve System</p>
<p style="text-align: center;"><b>LAINSON STUDIO</b>            BOONE'S PHOTOGRAPHER              SINCE 1924</p>	<p style="text-align: center;"><b>SCHROEDER            FUNERAL HOME</b>              AMBULANCE SERVICE              503 Story Street                      Telephone: 221</p>
<p style="text-align: center;"><b>RIEKENBERG'S</b>              For Complete Line of            READY-TO-WEAR                      DRY GOODS            MILLINERY            FLOOR COVERINGS                      SHADES</p>	<p style="text-align: center;"><b>E. H. WHITE, <i>News Dealer</i></b>              WHOLESALE &amp; RETAIL            MAGAZINES            UNION BUS DEPOT              GREYHOUND TRAVEL BUREAU</p>
<p style="text-align: center;">YOUR PERSONAL APPEARANCE            IS            OUR PERSONAL INTEREST    <b>Helen Dahlien Beauty Shop</b>            715 Carroll Street                      Telephone: 37</p>	<p style="text-align: center;">CONGRATULATIONS!    <b>PENNEY'S</b>            CLOTHING                      ACCESSORIES            SHOES              Boone, Iowa</p>



<p style="text-align: center;">BEAUTIFUL FRESH-CUT FLOWERS</p> <p style="text-align: center;"><b>KEMBLE'S GREENHOUSES</b></p> <p>Telephone: 280 1404 Marion Street, North</p>	<p style="text-align: center;">CONGRATULATIONS, SENIORS!</p> <p style="text-align: center;"><b>COOK'S PAINT</b></p> <p style="text-align: center;">GLASS      WALLPAPER      PAINT LINOLEUM      MIRRORS</p>
<p style="text-align: center;"><b>ODELL'S WESTERN AUTO</b></p> <p style="text-align: center;">SPORT GOODS, AUTO SUPPLIES RADIO'S &amp; APPLIANCES</p> <p>Telephone: 365      Ninth and Story Streets</p>	<p style="text-align: center;"><b>YOUR TREAT SHOP</b></p> <p style="text-align: center;"><i>"A Palace of Sweets"</i></p> <p style="text-align: center;">DELICIOUS CANDIES, NUTS ICE CREAM &amp; DO-NUTS</p> <p>816 Story Street      Telephone: 341</p>
<p style="text-align: center;"><b>S. HANSON LUMBER CO.</b></p>	<p style="text-align: center;">CONGRATULATIONS, SENIORS! FROM</p> <p style="text-align: center;"><b>GLOBE LOAN COMPANY</b></p> <p>801½ Story Street      Telephone: 2431</p>
<p style="text-align: center;">CONGRATULATIONS, SENIORS!</p> <p style="text-align: center;"><b>H. H. KRUSE CLOTHING CO.</b></p> <p style="text-align: center;"><i>The Place to Go for the Brand Names You Know</i></p> <p>803 Story Street      Telephone: 501-J</p>	<p style="text-align: center;"><b>DUKE LINDSTROM</b></p> <p style="text-align: center;"><i>"Dry Cleaning at Its Finest"</i></p>
<p style="text-align: center;"><b>VERNON BODY WORKS</b></p> <p style="text-align: center;">FRAME &amp; WHEEL ALIGNMENT GLASS INSTALLATION UPHOLSTERING      PAINTING</p> <p>915 Sixth Street      Boone, Iowa</p>	<p style="text-align: center;">CONGRATULATIONS, SENIORS!</p> <p style="text-align: center;"><b>GARRETSON ELECTRIC COMPANY</b></p> <p style="text-align: center;">Telephone: 654</p> <p>1003 Story Street      Boone, Iowa</p>

<p style="text-align: center;"><b>BOWMAN BROS.</b> <i>The Home of Fine Footwear</i></p> <p>802 Story Street                      Boone, Iowa</p>	<p style="text-align: center;">CONGRATULATIONS, SENIORS!</p> <p style="text-align: center;">Meet Your Friends at</p> <p style="text-align: center;"><b>SNAPPY SERVICE LUNCH</b></p> <p style="text-align: center;">912 Eighth Street East of Town Clock                      Boone, Iowa</p>
<p style="text-align: center;">CONGRATULATIONS, SENIORS!</p> <p style="text-align: center;"><b>DIXIE CREAM DO-NUT SHOP</b></p> <p>1005 Story Street                      Telephone: 321-J</p>	<p style="text-align: center;"><b>ARNOLD MOTOR SUPPLY</b></p> <p style="text-align: center;">AUTOMOTIVE JOBBERS</p> <p style="text-align: center;">Telephone: 235</p> <p>713-715 Arden Street                      Boone, Iowa</p>
<p style="text-align: center;"><b>BOONE SUPER-VALU</b></p> <p style="text-align: center;">FRUITS : MEATS AND GROCERIES</p> <p>720 Eighth Street                      Telephone: 666</p>	<p style="text-align: center;"><b>THE MUSIC SHOP</b></p> <p style="text-align: center;">MUSICAL INSTRUMENTS MUSIC SUPPLIES</p> <p>706 Eighth Street                      Telephone: 331</p>
<p style="text-align: center;"><b>BOONE AUTO COMPANY</b></p> <p style="text-align: center;">STUDEBAKER SALES &amp; SERVICE</p> <p style="text-align: center;">Body and Fender Repair</p> <p>Eighth and Arden Streets                      Telephone: 933</p>	<p style="text-align: center;"><b>KRUCK PLUMBING &amp; HEATING COMPANY</b></p> <p>711 Allen Street                      Telephone: 298</p>
<p style="text-align: center;"><b>STANDARD PRINTING COMPANY</b></p> <p style="text-align: center;">(Now SUNSTROM-MILLER PRESS)</p> <p>807 Keeler Street                      Telephone: 16</p>	<p style="text-align: center;">CONGRATULATIONS, SENIORS!</p> <p style="text-align: center;"><b>LANE'S TEXACO SERVICE STATION</b></p> <p style="text-align: center;">Eleventh and Story Streets</p>

**ECHTERNACH'S  
GROCERYTERIA**

"YOUR STORE SINCE 1933"  
Well Known Brands at Fair Prices

**BOONE LOCKER SERVICE**

FRED APPENZELLER  
Boone, Iowa

—{ QUALITY BEEF }—

**JULE W. KUECK**

*Registered Jeweler*

AMERICAN GEM SOCIETY

Boone, Iowa

**MILLER DRUG CO.**

The *REXALL* Store

*Dependable Prescription Service*

ON THE CORNER

BEST WISHES  
FOR  
FUTURE SUCCESS  
FROM

**BOB'S BOWLING ALLEY**

**BOONE BLANK BOOK CO.**

STATIONERS, PRINTERS  
and  
BLANK BOOK MAKERS

Boone, Iowa

**Best of Luck to the Seniors  
THE RECORD SHOP**

**BOONE SERVICE & SALES CO.**

619 Story Street Telephone: 648

**KADING INSURANCE AGENCY**  
*EFFICIENT INSURANCE SERVICE*

C. W. KADING W. E. KADING

Rooms 203-204  
Citizens National Building  
Boone, Iowa

CONGRATULATIONS!

FROM

**HAYS CLEANERS**

*"Like New When We Are Through"*

1016 Seventh Street Telephone: 604

**DR. T. E. KANE**

707 Citizens National Building

BOONE, IOWA

<p><b>ROCHO BROS., INC.</b>  ICE AND ALL KINDS OF COAL  COOLERATOR ICE REFRIGERATOR  On Display at Office  Eighth and Monona Streets Telephone: 195</p>	<p><b>SUPERIOR GROCERY  &amp;  MEAT MARKET</b>  <i>QUALITY FOOD &amp; MEATS</i></p>
<p><i>We Congratulate  the Seniors!</i></p> <p>The Best in Bake Goods</p> <p><b>JOHNSTONE BAKERY</b></p>	<p><b>spurgeon's</b>  THE <b>THRIFT</b> STORE</p> <p>HOSIERY LINGERIE  DRY GOODS  READY-TO-WEAR MILLINERY  <i>Quality Merchandise at Popular Prices</i></p>
<p>Member of the Master Building Service</p> <p><b>LIPPERT BROS., INC.</b>  GENERAL CONTRACTORS  Ready-Mixed Concrete  Telephone: 35  827 Monona Street Boone, Iowa</p>	<p><b>BLEE INSULATION &amp; SALES  COMPANY</b></p> <p>FIBERGLAS INSULATION  PAINT WALLPAPER  Telephone: 412-W Boone, Iowa</p>
<p><b>Olsen Chevrolet, Inc.</b>  CHEVROLET : BUICK  CHEVROLET TRUCKS  Telephone: 50</p>	<p><b>Farmers' Co-operative Elevator &amp;  Livestock Company</b></p> <p>GRAINS, FEEDS, SEED  FENCE &amp; FERTILIZER  Telephone: 697 Eleventh and Tama Sts.</p>
<p>DISPLAY CASES HOME FREEZERS  PORCELAIN REFRIGERATORS  REACH-IN REFRIGERATORS  WALK-IN COOLERS</p> <p><b>C. L. PERCIVAL CO., INC.</b>  COMMERCIAL REFRIGERATION OF ALL TYPES</p>	<p><b>HAMILTON HARDWARE</b></p> <p>GENERAL HARDWARE  &amp; APPLIANCES  712-714 Story Street Telephone: 33</p>

<p>PRESCRIPTION DRUGGISTS</p> <p><b>HERRALD DRUG CO.</b></p> <p>Remington Portable Typewriters Radios : School Supplies</p> <p>1017 Story Street, North      Boone, Iowa</p>	<p><b>BARSTAD</b></p> <p><i>Bakes the Best</i></p> <p>1023 Story Street      Telephone: 1545</p>
<p><b>DR. B. E. ATKINSON</b></p> <p>OSTEOPATHIC PHYSICIAN</p> <p>Suite 301-302 Boone National Building BOONE, IOWA</p> <p>Telephone: 450      Residence: 450-W2</p>	<p><b>GRAHAM'S</b></p> <p>READY-TO-WEAR MILLINERY DRY GOODS SHOES</p>
<p>GRADUATE into FINER CLOTHES at</p> <p><b>DAD AND LAD</b></p> <p>Boone, Iowa</p>	<p>INTERNATIONAL FARM EQUIPMENT TRUCKS—REFRIGERATION Expert Magneto Workshop Parts and Service</p> <p><i>Come and Visit Our New Home</i></p> <p><b>PEDERSON &amp; PAULSON</b></p> <p>Eighth and Linn Streets      Telephone: 210</p>
<p><b>FISHER HARDWARE</b></p> <p>COLEMAN HEADQUARTERS ADMIRAL AUTOMATICS</p> <p><i>Stop Here Before You Buy</i></p> <p>911 Eighth Street      Telephone: 2306</p>	<p><b>NORTH SIDE CLEANERS</b></p> <p><i>"Quality Cleaning"</i> <i>Is Our Motto</i></p> <p>Telephone: 217-J      1117 Story Street</p>
<p><b>GAMBLE STORES</b></p> <p>HARDWARE : SPORTING GOODS APPLIANCES</p> <p>Telephone: 320      Boone, Iowa</p>	<p><b>LINCOLN RESTAURANT</b></p> <p>Recommended by DUNCAN HINES</p>

<p>EVERY DAY A BARGAIN DAY <b>REDEKER</b> FURNITURE COMPANY</p>	<p><b>McCARTNEY SERVICE STATION</b> CITIES SERVICE PRODUCTS 703 Keeler Street Telephone: 204</p>
<p><b>BLUE BELT</b> FEEDS . . SEEDS . . GRAINS <b>E. H. FELTON &amp; CO.</b></p>	<p><b>LAWSON'S GROCERY AND MARKET</b> QUALITY GROCERIES &amp; MEATS 802 Eighth Street Telephone: 537</p>
<p>EYES ARE GOOD for a lifetime if they are given the care they need! <i>Use Better LIGHT for Better Sight</i> <b>IOWA ELECTRIC LIGHT AND POWER COMPANY</b></p>	<p><b>WILSON DRUG COMPANY</b> PRESCRIPTION SPECIALISTS 814 Eighth Street Telephone: 34</p>
<p><b>H. C. SCHARNWEBER, M. D.</b> 403 Boone National Building Office Telephone: 503 Residence Telephone: 2350</p>	<p><b>ERICKSON AUTO ELECTRIC SERVICE</b> AUTOMOTIVE ELECTRIC AND BATTERY SERVICE Seventh and Keeler Streets Telephone: 499</p>
<p><b>SUNSTROM PRINTING COMPANY</b> (Now the SUNSTROM-MILLER PRESS) <i>This Publication Is a Product of Our Shop</i></p>	<p>CONGRATULATIONS TO THE CLASS OF '50 <b>REA'S</b> <i>Smart Men's Wear</i> 717 Story Street Boone, Iowa</p>

<p><b>BOWMAN &amp; SON</b>  <b>LIVESTOCK DEALERS</b>  <b>WE BUY AND SELL</b>  <b>All Kinds of Livestock</b></p> <p>East on Highway 30      Telephone: 178</p>	<p><b>WESTERN OIL COMPANY</b>  <i>Your Phillips Distributor</i></p> <p>Seventh and Arden Streets  Boone, Iowa      Telephone: 2175</p>
<p><b>YEGGE LUMBER COMPANY</b>  Lumber and Building Material  Block and Tile  <b>QUALITY &amp; SERVICE</b></p> <p>Telephone: 400</p>	<p><b>ALLERS MOTOR CO., INC.</b>  <b>DODGE : PLYMOUTH</b>  <b>DODGE JOB-RATED TRUCKS</b>  <b>PARTS &amp; SERVICE</b></p> <p>819 Keeler Street      Boone, Iowa</p>
<p>Choose from the Largest Stocks in Boone</p> <p><b>PEOPLE'S CLOTHING STORE</b>  CLOTHING : FURNISHINGS  SHOES</p> <p>801-803 Eighth Street      Telephone: 378-W</p>	<p><i>"The Home of Good Food"</i>  <b>CRARY COFFEE SHOP</b></p> <p>Seventh and Story Sts.      Telephone: 462-W</p>
<p><b>PETERSEN MOTORS</b>  <b>OLDSMOBILE &amp; CADILLAC</b>  <b>SALES &amp; SERVICE</b></p> <p>Telephone: 613  806 Seventh Street      Boone, Iowa</p>	<p><b>BOB'S FLOWERS</b></p> <p>509 Story Street      Telephone: 463</p>
<p><b>DR. D. G. JOHNSON</b>  <b>OPTOMETRIST</b></p> <p>806 Eighth Street      Telephone: 459</p>	<p><b>STARKS TYPEWRITER &amp; SUPPLY COMPANY</b>  Typewriters and Adding Machines  Sales - Service - Rentals - Supplies</p> <p>Telephone: 1708-J  403 Sixteenth Street      Boone, Iowa</p>

2 good  
the  
4 gotten  
Quanita Comas

To a swell sport  
and a good teacher  
Janet Musser  
"54"

8th  
2

Good Luck  
Best Wishes  
Phyllis Westberg  
"54" hope

David Frazier

I liked being in  
your class  
Collett Davis

To a very nice  
teacher and a swell  
sport.  
Nancy Rae Morris

Donna Holbrook  
Carl Dean Surfus  
Tom Clark  
-54-

To a swell teacher  
Best wishes always  
Evelyn Harrington  
"54"  
Harlyne von Krogh  
"54?"

To a nice teacher  
from a student  
who is not  
very bright

Dale Croese  
"5-4"?

Janet Auld  
"54?"

Carol Jones  
The best teacher  
in B.H.S.  
Norman Burke

To the best  
teacher made  
Shirley  
Mestdagh

To a very sweet teacher  
I enjoyed being one of  
your pupils very much  
Virginia Doran  
Richard Blumberg  
Colleen Showers  
"54"

To a fair, swell teacher  
and a swell sport  
Leta Winans

Elsie Rogers  
Good Luck  
"Lots of Luck"  
Joann Germer

Good Luck always  
Janice Carpenter  
"54"  
To a nice  
teacher I  
was glad to be  
one of your pupils  
(Phyllis Greenfield)  
"54"

Good Luck always  
Janice Carpenter  
"54"  
I am glad you  
were the teacher  
to take eighth grade  
history.  
Bonnie Reid  
Jack Smith  
54? to my best  
teacher in  
8th grade.

I am glad you  
were the teacher  
to take eighth grade  
history.  
Bonnie Reid

Miss Thompson  
Thanks alot  
for your help  
in B- yetta  
Good Luck  
Best Wishes  
Donna  
McLead  
"51"



8<sup>th</sup> I

Marlene Trulin  
"54"  
D of Donovan

Belva M<sup>rs</sup> Nace  
"54"

To my favorite  
teacher  
Claudia Reu  
"54"

Charles Spencer

Donald Jackke  
"54"  
George DeBooge

To a wonderful teacher  
Eliz Anderson  
"54"

David Jacobson  
"54"  
Katie Biffles

Edward Morelo  
"54"

Judy Brown  
"54"

Nancy Jo Smith  
"54"

Lalanne Anderson  
Joyce Ulrich  
"54"

Donald  
Engel

Ed Jensen  
"54" D. Hope

Phyllis Boonquist  
"54?"

Phyllis Miller  
"54"

Shirley Knight  
"54"

Martha Lawritsen  
William Hestkamp

Willis Browning

Joe Smith  
"54" D. Hope

Raymond Mookman

Beverly Pipes

Love  
Shirley  
"Hope you have  
better luck in  
getting smart students!"  
Gracie Ann Conrad

Conrad  
"54"

Keith Williams  
I can write about the moon,  
I can write about the stars,  
But it would take too damn much  
to write how nice you are.  
Best wishes.  
Mary Eddy  
"54"  
Kathy Wright

